

Ministry of Defence  
Military Aviation Authority the Netherlands  
Airports and Airspace division  
PO Box 20701  
2500 ES Den Haag  
MPC 58H

Rijswijk, 24 May 2022

**AIRAC AMENDMENT 07/22**

**EFFECTIVE DATE 14 JUL 22**

to the Military Aeronautical Information Publication  
(vs 83-6100-004; pub. Nr. 010701)

1. The following changes to the MilAIP Netherlands have to be incorporated:

a. Handamendment:

None.

b. Page changes:

<b>Remove old</b>	<b>Insert new</b>	<b>Remove old</b>	<b>Insert new</b>	<b>Remove old</b>	<b>Insert new</b>
GEN 0.4-1	GEN 0.4-1	EHGR 2-5	EHGR 2-5	EHWO 2-3	EHWO 2-3
GEN 0.4-4	GEN 0.4-4			EHWO 2-7	EHWO 2-7
GEN 0.4-5	GEN 0.4-5	EHKD 2-18	EHKD 2-18	EHWO 2-8	EHWO 2-8
GEN 0.4-6	GEN 0.4-6			EHWO 2-9	EHWO 2-9
		EHLW 2-13	EHLW 2-13		
EHEH 2-6	EHEH 2-6				
EHEH 2-9	EHEH 2-9	EHVK 2-10	EHVK 2-10		
EHEH 2-13	EHEH 2-13				

2. After completion:

a. destroy obsolete pages;

b. insert letter of promulgation before page GEN 0;

c. record the incorporation of this amendment on page GEN 0.2-1.

3. The following MIL NOTAM are incorporated:

Military Aviation Authority NLD  
In order H-ALL

W.E.W. Jacobsen  
Lt Colonel



## GEN 0.4 CHECKLIST OF MIIAIP PAGES

PAGE	DATE		PAGE	DATE		PAGE	DATE
<b>PART 1 - GENERAL (GEN)</b>			<b>GEN 1</b>			2.2-6	12 NOV 2015
						2.3-1	27 JAN 2022
<b>GEN 0</b>			1.1-1	12 NOV 2015		2.3-2	27 JAN 2022
			1.1-2	12 NOV 2015		2.4-1	30 JAN 2020
0.1-1	12 NOV 2015		1.3-1	30 JAN 2020		2.4-2	12 NOV 2015
0.1-2	12 NOV 2015		1.3-2	12 NOV 2015		2.5-1	04 NOV 2021
0.1-3	07 DEC 2017		1.6-1	12 NOV 2015		2.5-2	12 NOV 2015
0.1-4	12 NOV 2015		1.6-2	30 JAN 2020		2.6-1	12 NOV 2015
0.2-1	23 APR 2020		1.6-3	30 JAN 2020		2.6-2	12 NOV 2015
0.2-2	30 JAN 2020		1.6-4	30 JAN 2020			
0.3-1	28 APR 2016		1.7-1	03 DEC 2020		<b>GEN 3</b>	
0.3-2	12 NOV 2015		1.7-2	22 APR 2021			
0.4-1	14 JUL 2022		1.7-3	22 APR 2021		3.1-1	30 JAN 2020
0.4-2	16 JUN 2022		1.7-4	22 APR 2021		3.1-2	07 DEC 2017
0.4-3	16 JUN 2022		1.7-5	22 APR 2021		3.1-3	30 DEC 2021
0.4-4	14 JUL 2022		1.7-6	12 NOV 2015		3.1-4	12 NOV 2015
0.4-5	14 JUL 2022					3.2-1	15 SEP 2016
0.4-6	14 JUL 2022		<b>GEN 2</b>			3.2-2	12 NOV 2015
0.5-1	12 NOV 2015					3.3-1	30 JAN 2020
0.5-2	12 NOV 2015		2.1-1	12 NOV 2015		3.3-2	30 JAN 2020
0.6-1	30 JAN 2020		2.1-2	12 NOV 2015		3.3-3	01 FEB 2018
0.6-2	06 DEC 2018		2.2-1	29 MAR 2018		3.3-4	12 NOV 2015
0.6-3	30 JAN 2020		2.2-2	13 OCT 2016		3.4-1	12 NOV 2015
0.6-4	30 JAN 2020		2.2-3	12 NOV 2015		3.4-2	12 NOV 2015
			2.2-4	12 NOV 2015		3.5-1	07 DEC 2017
			2.2-5	12 NOV 2015		3.5-2	01 FEB 2018

<b>PAGE</b>	<b>DATE</b>		<b>PAGE</b>	<b>DATE</b>		<b>PAGE</b>	<b>DATE</b>
3.5-3	12 NOV 2015		1.1-2	30 JAN 2020		1.10-3	11 OCT 2018
3.5-4	12 NOV 2015		1.1-3	30 JAN 2020		1.10-4	03 JAN 2019
3.5-5	12 NOV 2015		1.1-4	16 JUN 2022		1.11-1	03 JAN 2019
3.5-6	19 May 2022		1.1-5	16 JUN 2022		1.11-2	12 NOV 2015
3.6-1	30 JAN 2020		1.1-6	16 JUN 2022		1.12-1	30 JAN 2020
3.6-2	04 NOV 2021					1.12-2	12 NOV 2015
3.6-3	18 AUG 2016						
3.6-4	30 JAN 2020		1.2-1	18 JUN 2020		<b>ENR 2</b>	
			1.2-2	18 JUN 2020			
<b>GEN 4</b>			1.3-1	18 JUN 2020		2.1-1	12 NOV 2015
			1.3-2	18 JUN 2020		2.1-2	12 NOV 2015
4.1-1	12 NOV 2015		1.3-3	18 JUN 2020			
4.1-2	30 JAN 2020		1.3-4	12 NOV 2015		<b>ENR 3</b>	
			1.4-1	15 AUG 2019			
<b>PART 2 EN-ROUTE (ENR)</b>			1.4-2	12 NOV 2015		3.1-1	30 JAN 2020
			1.5-1	30 JAN 2020		3.1-2	12 NOV 2015
<b>ENR 0</b>			1.5-2	12 NOV 2015		3.5-1	12 NOV 2015
			1.6-1	24 FEB 2022		3.5-2	12 NOV 2015
0.6-1	16 JUN 2022		1.6-2	03 DEC 2020		3.5-3	12 NOV 2015
0.6-2	06 DEC 2018		1.6-3	03 DEC 2020		3.5-4	12 NOV 2015
0.6-3	16 JUN 2022		1.6-4	18 JUN 2020		3.5-5	12 NOV 2015
0.6-4	24 FEB 2022		1.7-1	12 NOV 2015		3.5-6	08 OCT 2020
0.6-5	16 JUN 2022		1.7-2	30 JAN 2020		3.5-7	24 FEB 2022
0.6-6	30 JAN 2020		1.8-1	12 OCT 2017		3.5-8	07 DEC 2017
			1.8-2	12 NOV 2015		3.5-9	07 DEC 2017
<b>ENR 1</b>			1.9-1	30 JAN 2020		3.5-10	07 DEC 2017
1.1-1	30 JAN 2020		1.9-2	12 OCT 2017		3.5-11	30 JAN 2020
			1.10-1	30 JAN 2020			
			1.10-2	12 OCT 2017			

PAGE	DATE		PAGE	DATE		PAGE	DATE
3.5-12	30 JAN 2020		5.2-6	21 JUN 2018		<b>ENR 6</b>	
3.5-13	24 FEB 2022		5.2-7	21 JUN 2018			
3.5-14	07 NOV 2019		5.2-8	30 JAN 2020		6.0-1	16 JUN 2022
3.5-15	12 NOV 2015		5.2-9	30 JAN 2020		6.0-2	12 NOV 2015
3.5-16	12 NOV 2015		5.2-10	30 JAN 2020		6.1-1	12 NOV 2015
3.5-17	16 JUN 2022		5.2-11	30 JAN 2020		6.1-2	05 NOV 2020
3.5-18	02 JAN 2020		5.2-12	30 JAN 2020		6.1-3	07 NOV 2019
			5.2-13	22 APR 2021		6.1-4	30 MAR 2017
<b>ENR 4</b>			5.2-14	22 APR 2021		6.1-5	24 FEB 2022
			5.2-15	17 JUN 2021		6.1-6	07 NOV 2019
4.1-1	04 NOV 2021		5.2-16	03 DEC 2020		6.1-7	07 NOV 2019
4.1-2	28 JAN 2021		5.2-17	22 APR 2021		6.1-8	07 NOV 2019
4.1-3	24 FEB 2022		5.2-18	30 JAN 2020		6.1-9	07 NOV 2019
4.1-4	24 FEB 2022		5.2-19	30 JAN 2020		6.1-10	07 NOV 2019
4.1-5	28 JAN 2021		5.2-20	30 JAN 2020		6.1-11	07 NOV 2019
4.1-6	28 JAN 2021		5.2-21	30 JAN 2020		6.1-12	07 NOV 2019
			5.2-22	25 MAR 2021		6.1-13	07 NOV 2019
<b>ENR 5</b>			5.2-23	30 JAN 2020		6.1-14	07 NOV 2019
			5.2-24	29 MAR 2018		6.1-15	16 JUN 2022
5.1-1	30 JAN 2020		5.3-1	30 JAN 2020		6.1-16	16 JUN 2022
5.1-2	30 JAN 2020		5.3-2	12 NOV 2015		6.1-17	12 NOV 2015
5.1-3	30 JAN 2020		5.6-1	30 DEC 2021		6.1-18	12 NOV 2015
5.1-4	12 NOV 2015		5.6-2	12 NOV 2015		6.1-19	12 NOV 2015
5.2-1	09 NOV 2017					6.1-20	12 NOV 2015
5.2-2	30 JAN 2020					6.1-21	12 NOV 2015
5.2-3	03 MAR 2016					6.1-22	03 JAN 2019
5.2-4	30 JAN 2020					6.1-23	16 JUN 2022
5.2-5	24 FEB 2022					6.1-24	16 JUN 2022
						6.1-25	16 JUN 2022
						6.1-26	16 JUN 2022

<b>PAGE</b>	<b>DATE</b>	<b>PAGE</b>	<b>DATE</b>	<b>PAGE</b>	<b>DATE</b>
<b>PART 3 AERODROMES (AD)</b>		EHDL 2-8	12 SEP 2019	EHEH 2-18	09 SEP 2021
		EHDL 2-9	24 FEB 2022	EHEH 2-19	09 SEP 2021
<b>AD 0</b>		EHDL 2-10	24 FEB 2022	EHEH 2-20	09 SEP 2021
		EHDL 2-11	21 APR 2022	EHEH 2-21	09 SEP 2021
0.6-1	12 NOV 2015	EHDL 2-12	24 FEB 2022	EHEH 2-22	09 SEP 2021
0.6-2	12 NOV 2015	EHDL 2-13	21 APR 2022	EHEH 2-23	09 SEP 2021
0.6-3	12 NOV 2015	EHDL 2-14	21 APR 2022	EHEH 2-24	09 SEP 2021
0.6-4	15 SEP 2016	EHDL 2-15	24 FEB 2022	EHEH 2-25	09 SEP 2021
0.6-5	15 SEP 2016	EHDL 2-16	24 FEB 2022	EHEH 2-26	09 SEP 2021
0.6-6	12 NOV 2015			EHEH 2-27	09 SEP 2021
		EHDP 2-1	12 AUG 2021	EHEH 2-28	09 SEP 2021
<b>AD 1</b>		EHDP 2-2	12 NOV 2015		
1.1-1	12 NOV 2015	EHEH 2-1	15 JUL 2021	EHGR 2-1	03 DEC 2020
1.1-2	12 NOV 2015	EHEH 2-2	26 MAR 2020	EHGR 2-2	12 NOV 2015
1.2-1	12 NOV 2015	EHEH 2-3	19 May 2022	EHGR 2-3	19 May 2022
1.2-2	12 NOV 2015	EHEH 2-4	28 JAN 2021	EHGR 2-4	28 JAN 2021
1.3-1	12 NOV 2015	EHEH 2-5	15 JUL 2021	EHGR 2-5	14 JUL 2022
1.3-2	12 NOV 2015	EHEH 2-6	14 JUL 2022	EHGR 2-6	30 JAN 2020
		EHEH 2-7	18 JUN 2020	EHGR 2-7	03 JAN 2019
<b>AD 2</b>		EHEH 2-8	15 JUL 2021	EHGR 2-8	03 DEC 2020
		EHEH 2-9	14 JUL 2022	EHGR 2-9	04 NOV 2021
EHDL 2-1	03 DEC 2020	EHEH 2-10	30 DEC 2021	EHGR 2-10	03 DEC 2020
EHDL 2-2	12 NOV 2015	EHEH 2-11	05 NOV 2020	EHGR 2-11	30 DEC 2021
EHDL 2-3	19 MAY 2022	EHEH 2-12	24 FEB 2022	EHGR 2-12	03 DEC 2020
EHDL 2-4	21 APR 2022	EHEH 2-13	14 JUL 2022	EHGR 2-13	03 DEC 2020
EHDL 2-5	21 APR 2022	EHEH 2-14	30 DEC 2021		
EHDL 2-6	21 APR 2022	EHEH 2-15	09 SEP 2021		
EHDL 2-7	21 APR 2022	EHEH 2-16	09 SEP 2021		
		EHEH 2-17	09 SEP 2021		

<b>PAGE</b>	<b>DATE</b>		<b>PAGE</b>	<b>DATE</b>		<b>PAGE</b>	<b>DATE</b>
EHGR 2-14	03 DEC 2020		EHKD 2-20	15 JUL 2021		EHLW 2-20	24 FEB 2022
EHGR 2-15	30 DEC 2021		EHKD 2-21	15 JUL 2021		EHLW 2-21	24 FEB 2022
EHGR 2-16	24 FEB 2022		EHKD 2-22	09 SEP 2021		EHLW 2-22	24 FEB 2022
EHGR 2-17	03 DEC 2020		EHKD 2-23	15 JUL 2021		EHLW 2-23	24 FEB 2022
EHGR 2-18	03 DEC 2020		EHKD 2-24	15 JUL 2021		EHLW 2-24	24 FEB 2022
EHGR 2-19	03 DEC 2020		EHKD 2-25	15 JUL 2021		EHLW 2-25	24 FEB 2022
EHGR 2-20	03 DEC 2020		EHKD 2-26	15 JUL 2021		EHLW 2-26	24 FEB 2022
EHGR 2-21	03 DEC 2020					EHLW 2-27	24 FEB 2022
EHGR 2-22	03 DEC 2020					EHLW 2-28	24 FEB 2022
						EHLW 2-29	24 FEB 2022
EHKD 2-1	24 MAR 2022		EHLW 2-1	03 DEC 2020		EHLW 2-30	24 FEB 2022
EHKD 2-2	28 APR 2016		EHLW 2-2	03 DEC 2020		EHLW 2-31	24 FEB 2022
EHKD 2-3	19 MAY 2022		EHLW 2-3	19 MAY 2022		EHLW 2-32	24 FEB 2022
EHKD 2-4	28 APR 2016		EHLW 2-4	28 JAN 2021		EHLW 2-33	24 FEB 2022
EHKD 2-5	12 AUG 2021		EHLW 2-5	05 DEC 2019		EHLW 2-34	24 FEB 2022
EHKD 2-6	15 JUL 2021		EHLW 2-6	12 NOV 2015		EHLW 2-35	24 FEB 2022
EHKD 2-7	15 JUL 2021		EHLW 2-7	03 DEC 2020		EHLW 2-36	24 FEB 2022
EHKD 2-8	13 AUG 2020		EHLW 2-8	16 JUL 2020		EHLW 2-37	24 FEB 2022
EHKD 2-9	15 JUL 2021		EHLW 2-9	03 DEC 2020		EHLW 2-38	24 FEB 2022
EHKD 2-10	13 AUG 2020		EHLW 2-10	16 JUL 2020		EHLW 2-39	24 FEB 2022
EHKD 2-11	15 JUL 2021		EHLW 2-11	25 FEB 2021		EHLW 2-40	24 FEB 2022
EHKD 2-12	13 AUG 2020		EHLW 2-12	03 DEC 2020			
EHKD 2-13	15 JUL 2021		EHLW 2-13	14 JUL 2022		EHVK 2-1	03 DEC 2020
EHKD 2-14	24 FEB 2022		EHLW 2-14	24 FEB 2022		EHVK 2-2	12 NOV 2015
EHKD 2-15	04 NOV 2021		EHLW 2-15	25 FEB 2021		EHVK 2-3	19 May 2022
EHKD 2-16	15 JUL 2021		EHLW 2-16	25 FEB 2021		EHVK 2-4	28 JAN 2021
EHKD 2-17	24 FEB 2022		EHLW 2-17	24 FEB 2022		EHVK 2-5	12 AUG 2021
EHKD 2-18	14 JUL 2022		EHLW 2-18	24 FEB 2022		EHVK 2-6	12 NOV 2015
EHKD 2-19	30 DEC 2021		EHLW 2-19	24 FEB 2022		EHVK 2-7	30 DEC 2021

EHVK 2-8	05 NOV 2020		EHWO 2-16	30 DEC 2021		
EHVK 2-9	30 DEC 2021		EHWO 2-17	21 APR 2022		
EHVK 2-10	14 JUL 2022		EHWO 2-18	30 DEC 2021		
EHVK 2-11	30 DEC 2021		EHWO 2-19	30 DEC 2021		
EHVK 2-12	03 DEC 2020		EHWO 2-20	28 JAN 2021		
EHVK 2-13	03 DEC 2020					
EHVK 2-14	03 DEC 2020					
EHVK 2-15	03 DEC 2020					
EHVK 2-16	03 DEC 2020					
EHVK 2-17	20 MAY 2021					
EHVK 2-18	03 DEC 2020					
EHVK 2-19	03 DEC 2020					
EHVK 2-20	09 SEP 2021					
EHVK 2-21	09 SEP 2021					
EHVK 2-22	05 NOV 2020					
EHWO 2-1	27 JAN 2022					
EHWO 2-2	28 JAN 2021					
EHWO 2-3	14 JUL 2022					
EHWO 2-4	19 MAY 2022					
EHWO 2-5	12 AUG 2021					
EHWO 2-6	28 JAN 2021					
EHWO 2-7	14 JUL 2022					
EHWO 2-8	14 JUL 2022					
EHWO 2-9	14 JUL 2022					
EHWO 2-10	28 JAN 2021					
EHWO 2-11	30 DEC 2021					
EHWO 2-12	30 DEC 2021					
EHWO 2-13	30 DEC 2021					
EHWO 2-14	21 APR 2022					
EHWO 2-15	30 DEC 2021					



## EHEH AD 2.18 Air traffic services communication facilities

STATION/ SERVICE	CALL SIGN OR IDENTIFICATION	FREQUENCY MHz	HOURS	REMARKS
1	2	3	4	5
	As appropriate	121.500 243.000	HO	Emergency FREQ for all services
TWR	Eindhoven Tower	131.005*)**) 122.100 241.550*) 257.800	HO	*)Primary FREQ **)VDF
GND CTL	Eindhoven Ground	335.750 121.930	HO	
APP	RAPCON South	123.180*) 122.100 388.525*)	HO	Radar equipped
RADAR	Eindhoven Arrival	124.530**) 122.100 265.975	HO	Through APP
ATIS		126.030		Coverage 60 NM/20000 ft

## EHEH AD 2.19 Radio navigation and landing aids

FACILITY	ID	CHANNEL FREQ.	HOURS	CO-ORD.	RANGE/ ALTITUDE	REMARKS
1	2	3	4	5	6	7
TACAN	EHV	CH 119X	H24	51°26'53.39"N 005°22'29.78"E	150 NM/60000 ft	FREQ protected
ILS 03 LOCALIZER	EHZ	109.750	H24	51°27'45.01"N 005°23'18.19"E		033° MAG 0.23 NM from the THR RWY 21
GLIDEPATH		333.050	H24	51°26'34.18"N 005°22'06.36"E		0.20 NM past THR RWY 03
DME 03	EHZ	CH 34Y	H24	51°26'34.18"N 005°22'06.36"E		Situated on Glide- path 03. One direc- tion only.
ILS 21 LOCALIZER	EHO	109.750	H24	51°26'15.09"N 005°21'37.39"E		213° MAG 0.25 NM from the THR RWY 03
GLIDEPATH		333.050	H24	51°27'22.30"N 005°23'01.56"E		0.19 NM past THR RWY 21
DME 21	EHO	CH 34Y	H24	51°27'22.30"N 005°23'01.56"E		Situated on Glide- path 21. One direc- tion only.

### EHEH AD 2.20 Local traffic regulations

#### START UP PROCEDURES

For pushback and start-up permission contact Eindhoven Ground 121.930 this request shall include Person On Board and parking position.

#### TAXI PROCEDURES

Eindhoven Ground is operational during aerodrome operational hours. On taxiway no turns larger than 90° allowed. ATC may assign an intersection take-off to any aircraft for operational reasons. During low visibility procedures (visibility < 1500 m and cloudbase < 200 ft) limited use of intersection take-offs are allowed.

### EHEH AD 2.21 Noise abatement procedures

RWY 03: Climb on RWY track until 4 DME and at least 1000 ft.

RWY 21: Climb on RWY track until 3 DME and at least 1000 ft.

Instrument approaches mandatory, light ACFT exempted.

### EHEH AD 2.22 Flight procedures

#### IFR procedures

The IAP and SID procedures are established in accordance with STANAG 3759 and AATCP-1.

NOTE: Exercise caution when intercepting the glide slope from above as this increases the risk of false glide slope captur

#### RNP Z approach RWY 03

Serial number	Path Des-criptor	WPT Ident	Fly Over	Course Mag°/(T°)	Recom navaid	Dist nm	turn	Altitude (ft AMSL)	Speed (KIAS)	VPA (°TCH(ft))	NAV Spec
001	IF	TILVU						+2000			RNAV1
002	TF	RUSAL		170/(171.9)		8.3					RNAV1
003	TF	ERSUL		124/(126.0)		5.0		+2000	-220		RNAV1
004	IF	MITSA						+2000			RNAV1
005	TF	ERSUL		302/(303.8)		5.0		+2000	-220		RNAV1
006	IF	ERSUL						+2000	-220		RNAV1
007	TF	EH573		033/(034.9)		2.1		+2000			RNP APCH
008	TF	THR03	Y	033/(034.9)		5.9				-3.00/50	RNP APCH
009	TF	EH550	Y	033/(035.0)		4.6					RNP APCH
010	DF	EHOJI					L	@3000			

Output data	
Data Block	10 08 05 08 05 15 D0 00 01 31 32 05 3C 7F 15 16 00 9A 4F 02 85 16 DE C4 FD 0B 80 FD F4 01 2C 01 64 00 C8 AF 3E 0B 00 1D
Calculated CRC Value	3E0B001D
Supplied CRC Value	3E0B001D
Comparison Result	OK

Required Additional Data	
ICAO Code	EH
LTP/FTP Orthometric Height (metres)	20.3

NOTE: EUROCONTROL FAS DB tool Version 3.2.0

### VFR procedures

Arrival, departure and crossing VFR flights shall be carried out via the arrival/departure routes unless otherwise instructed by ATC or approved on pilots request.

CONVENTIONAL ACFT:

AD control is to be called 15 MIN prior LDG and ACFT have to join the circuit under a 90° angle to the ordered down wind.

HEL:

Approach and departure procedures to be carried out from north-west. When approaching from/departing to north-west HEL may cross RWY 03/21 after R/T permission has been obtained. In order to avoid built-up areas, sector 060/120 is prohibited.

#### REPORTING POINTS:

Echo: 51°24'24"N 005°33'40"E  
 Hotel: 51°28'45"N 005°19'16"E  
 Mike: 51°26'12"N 005°25'34"E  
 Oscar: 51°29'59"N 005°17'23"E  
 Tango: 51°34'20"N 005°17'00"E  
 Victor: 51°24'18"N 005°25'53"E  
 Whiskey: 51°30'00"N 005°11'42"E  
 X-Ray: 51°20'35"N 005°25'14"E  
 Zulu: 51°18'59"N 005°27'09"E

#### CIRCUIT HEIGHTS:

Conventional ACFT: 1500 ft  
 Light ACFT: 1000 ft  
 HEL: 600 ft

NOTE: R/H circuit on RWY 21

### LOW VISIBILITY PROCEDURES

During periods of low visibility the overall ATC capacity is reduced. To guarantee aircraft safety an optimal use of ATC capacity, Eindhoven Airport uses low visibility procedures. When the visibility  $\leq 1500$  m and/or tcloud base  $\leq 200$  ft cautionary measures are taken and the following low visibility procedures will be initiated.

Four low visibility phases are recognised:

Phase	Conditions	Procedure
A	RVR <sup>1</sup> $\leq 1500$ m and/or ceiling $\leq 300$ ft but $> 200$ ft	Limited use of intersection take-offs.; All WIP on airside will be terminated. No conditional clearances
B	RVR $< 1100$ m and/or ceiling $\leq 200$ but $> 100$ ft	Separation BTN landing acft will be increased to 8 Nm
C	RVR $< 550$ m and/or ceiling $\leq 100$ ft	Tfc will be reduced to "one movement a time"
D	RVR $< 300$ m	The airport is below operational minima for arriving and departing aircraft

NOTE: <sup>1</sup> RVR of the runway in use is mandatory

### EHEH AD 2.23 Additional information

Approach control through Rapcon South. ILS approaches for RWY 03/21 from 2000 ft. RVR AVBL for RWY 03/21<sup>1)</sup>.

AIS Briefing office facility and the ATS Reporting Office (ARO) is only available through the Flight Data and Notam Office (FDNO) located at MilATCC Schiphol.

Tel: +31(0)20 4062840

Tel: +31(0)20 4062841

E-mail: aocs.fdns@mindef.nl

AFTN: EHMCZPZX

avlbl H24

PPR 24 HRS: for Prior Permission Request contact Mission Support

Tel: +31(0)40 2896837

Fax: +31(0)40 2896815

E-mail: amc.occ@mindef.nl

CIV training flights prohibited except for home-based ACFT.

No X-servicing for armed ACFT.

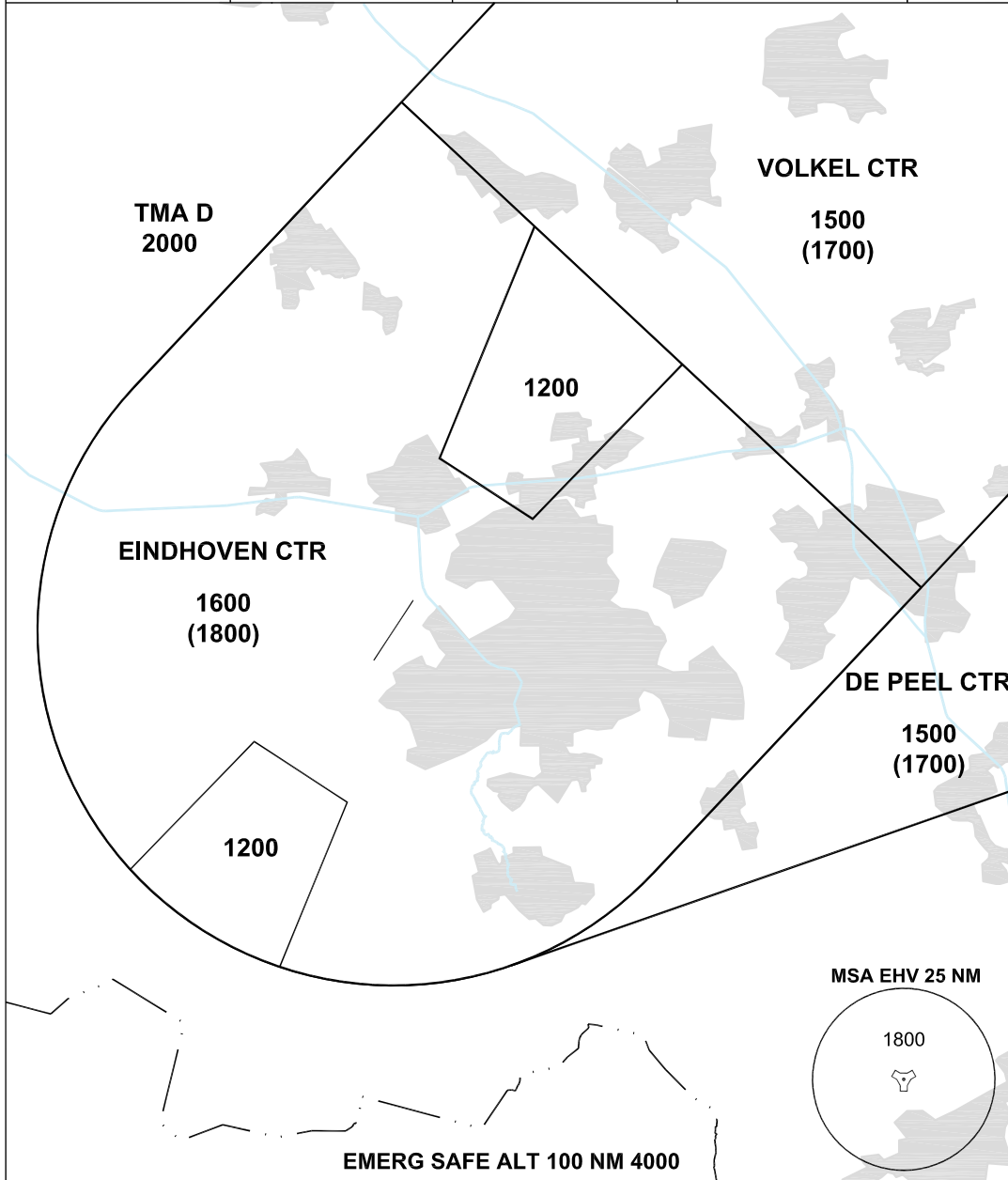
1) Aircraft crossing the runway could cause interference to the ILS signal that may result in significant ILS signal deviations.

**LOCAL MAP**

See: AIP NL EH-AD-2 EHEH-VAC-1

**MIPS** **MINIMUM VECTORING ALTITUDE** AD ELEV 74 **MVA CHART**  
**EINDHOVEN (EHEH)**

DUTCH MIL		RAPCON SOUTH		EINDHOVEN TWR		GND CTL		ATIS*
336.325	125.930	388.525	123.180	241.550	131.005	335.750	121.930	126.030



CHANGES: EDITORIAL

- THE ALTITUDE BETWEEN BRACKETS IS TO BE USED FOR THE CORRESPONDING SECTOR WHEN AIR TEMPERATURE AT AIRBASE ALTITUDE IS LOWER THAN -16°.
- ALTITUDES ONLY AVAILABLE IF THE RADAR COVERAGE PERMITS.

RNLAF 30 DEC 2021

### EHGR AD 2.16 Helicopter landing area

1	Location	Centre of the north-west corner RWY 10/28 and 02/20
2	Marking	Daylight marking
3	Lighting	Yes, non NATO standard
4	Remarks	Nil

### EHGR AD 2.17 Air traffic services airspace

1	Designation and lateral limits	Gilze-Rijen control zone 51°29'58.19"N 004°47'48.26"E; along clockwise arc (radius 6.5 NM, centre 51°34'02.56"N 004°55'54.61"E) to 51°28'56.13"N 005°02'20.09"E; along Dutch-Belgian border to 51°28'14.92"N 005°00'36.24"E; along clockwise arc (radius 6.5 NM, centre 51°34'02.56"N 004°55'54.61"E) to 51°28'32.16"N 004°50'23.92"E; along Dutch-Belgian border to point of origin.
2	Vertical limits	GND to 3000 ft AMSL
3	Airspace classification	D
4	ATS unit call sign Language(s)	Contact initially Gilze-Rijen TWR. English
5	Transition altitude	IFR: 3000 ft AMSL; VFR: 3500 ft AMSL
6	Remarks	Nil

### EHGR AD 2.18 Air traffic services communication facilities

STATION/ SERVICE	CALL SIGN OR IDENTIFICATION	FREQUENCY MHz	HOURS	REMARKS
1	2	3	4	5
	As appropriate	121.500 243.000	HO	Emergency FREQ for all services
TWR	Gilze-Rijen Tower	125.330 <sup>*)</sup> 122.100 277.350 <sup>*)</sup> 257.800	HO	<sup>*)</sup> Primary FREQ
GND CTL	Gilze-Rijen Ground	123.300 278.125	HO	
APP	Rapcon West	123.580 281.475	HO	Radar equipped
	Gilze Arrival	123.580 359.975	HO	Through APP
	Gilze Monitor	128.990	HO	Nieuw Milligen TMA D1

## EHGR AD 2.19 Radio navigation and landing aids

FACILITY	ID	CHANNEL FREQ.	HOURS	CO-ORD.	RANGE/ ALTITUDE	REMARKS
1	2	3	4	5	6	7
TACAN	GZR	CH 111X	H24	51°33'57.73"N 004°56'00.68"E	40 NM/ 25000 ft	FREQ protected
ILS LOCALIZER	GZO	111.900	H24	51°34'11.49"N 004°54'34.82"E		ILS-antenna 55 ft AMSL
GLIDEPATH		331.100		51°33'54.24"N 004°56'42.50"E		
DME		CH 56X	H24	51°33'54.24"N 004°56'42.50"E		

## EHGR AD 2.20 Local traffic regulations

### Glider- and Light ACFT flying

Glider- and light ACFT flying outside OPR HR SR/SS.

## EHGR AD 2.21 Noise abatement procedures

Noise abatement procedures in the CTR. Except for tactical entries during rejoining and landing-procedures flying with a speed of 300 KTS or more is forbidden. Unless safety- or operational reasons dictate otherwise the use of afterburner is prohibited. No practice-approaches are to be made after 2100 (2000) HRS. VFR and IFR departure/approach procedures are projected in such a way that noise hindrance is minimized as much as possible.

## EHGR AD 2.22 Flight procedures

### IFR procedures

The IAP and SID procedures are established in accordance with STANAG 3759 and AATCP-1.

### VFR procedures

APPROACH PROCEDURES FOR JET ACFT (for RWY 10/28 only):

Approach at 2000 ft AMSL from the NE intercepting inbound R-045 GZR TACAN. Report at 6.5 DME (reporting point 'the Kets'). Maintain 2000 ft AMSL and proceed to overhead GZR TACAN. For RWY 28 turn left to IP, followed by a L/H circuit at 1500 ft AMSL. For RWY 10 turn right to IP, followed by a R/H circuit at 1500 ft AMSL.

DEPARTURE PROCEDURES FOR JET ACFT:

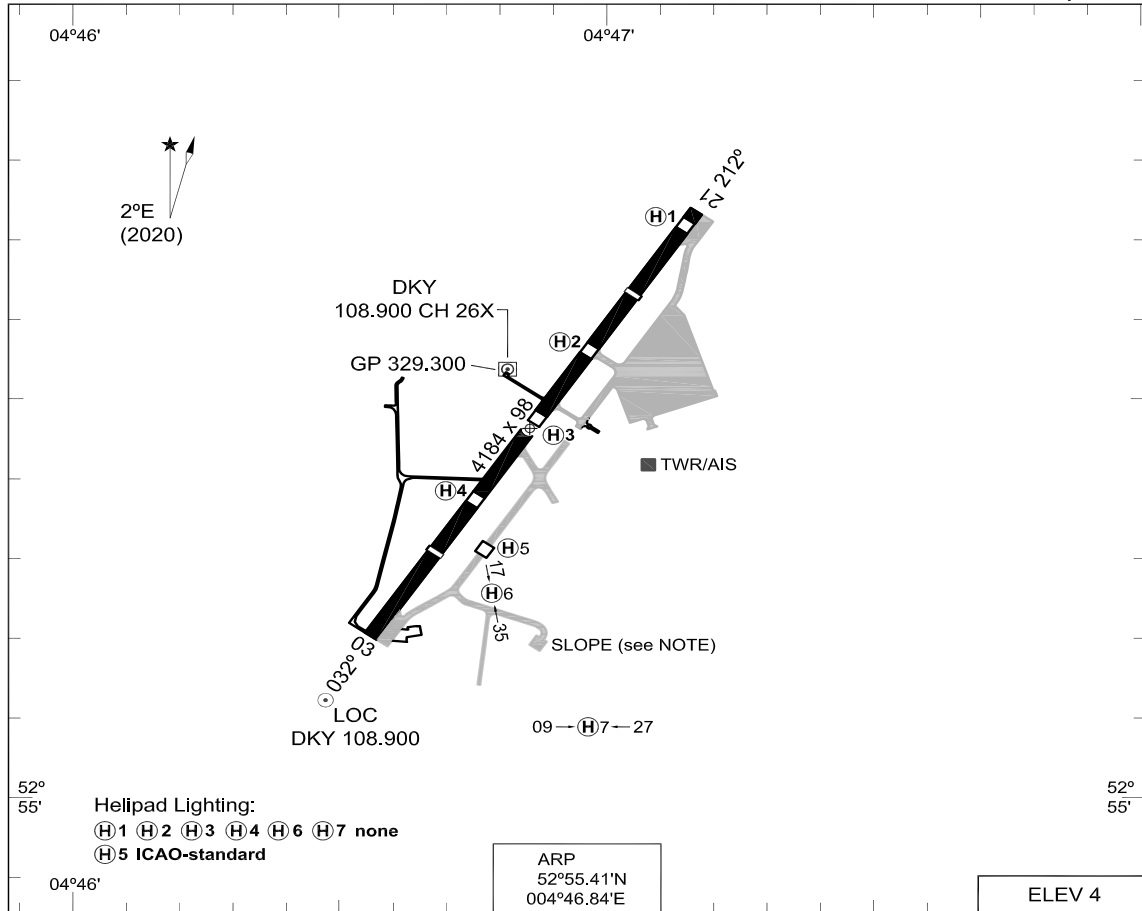
RWY 28: Maintain RWY heading until reaching 500 ft AMSL. Do not exceed 1000 ft AMSL over the RWY. Turn left to 240° magnetic climbing to 1500 ft AMSL; maintain heading until abeam Ulvenhout.

RWY 10: Maintain RWY heading until reaching 500 ft AMSL. Do not exceed 1000 ft AMSL over the RWY. Turn right to 145° magnetic climbing to 1500 ft AMSL; maintain heading until abeam Goirle.



**MIPS  
AERODROME CHART**

**DE KOOY (EHKD)**



Helipad Lighting:  
 (H)1 (H)2 (H)3 (H)4 (H)6 (H)7 none  
 (H)5 ICAO-standard

ARP  
 52°55.41'N  
 004°46.84'E

ELEV 4

RWY	PCN	TORA	ASDA	TODA	LDA	THR ELEV	THR PSN
21	62 F/A/W/T	4184	4184	4381	3377	2	52°55.58'N 004°47.03'E
03	62 F/A/W/T	3789	3789	3986	3334	3	52°55.19'N 004°46.59'E

DE KOOY TWR 379.750 120.130 121.730 or 379.750 (Ground Control)  
 DE KOOY ARRIVAL 372.150 124.230

SRA	PROC. CRITERIA	RWY	GS	TCH	OTCH	RPI	CAT	MINIMA CRITERIA	MINIMA
	MIPS	21					ABH	MIPS	500-2000 498 (500-2.0)
	MIPS	03					ABH	MIPS	380-2400 377 (400-2.4)

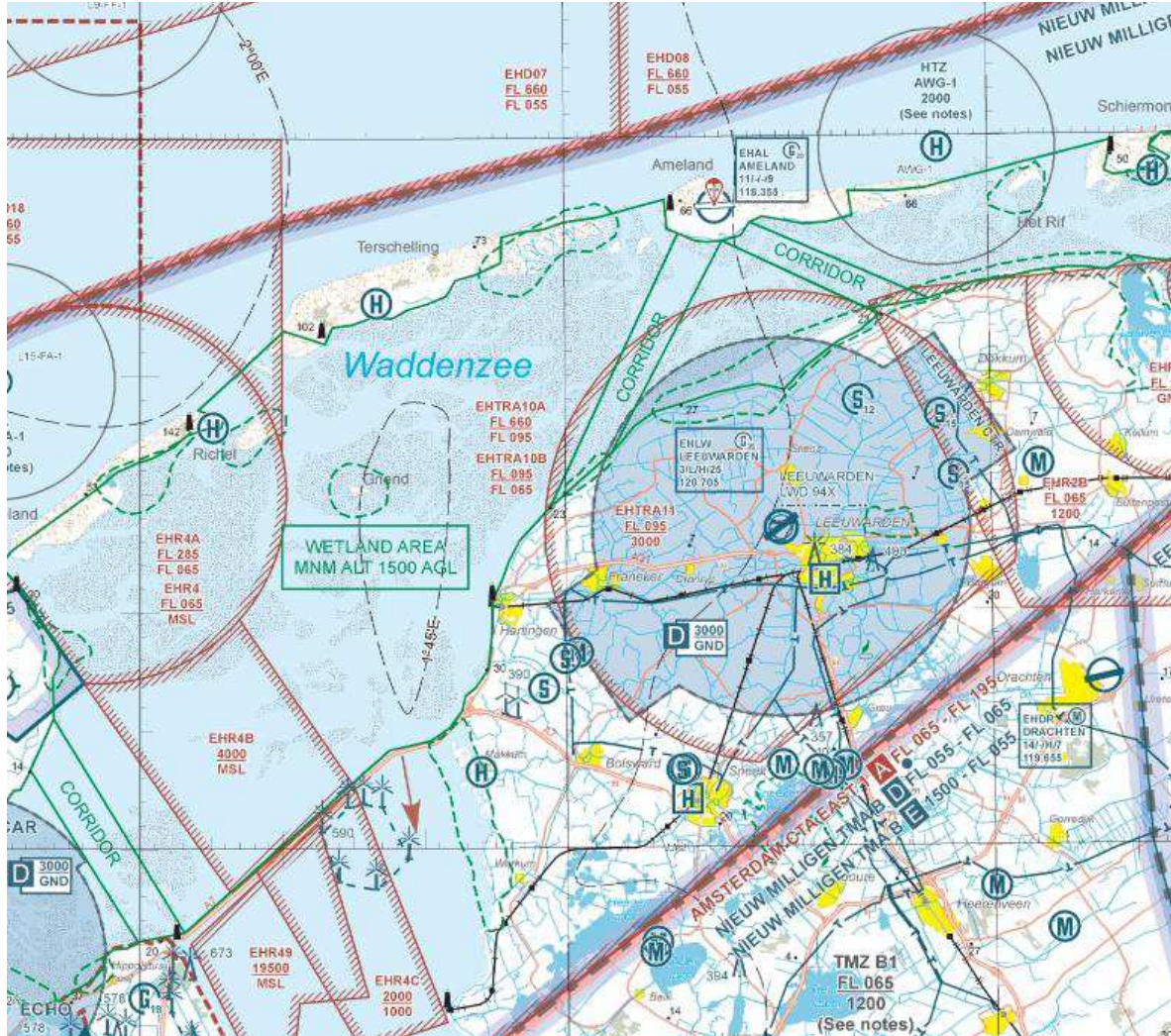
**NOTE:** SLOPE; WESTSIDE 5°, SOUTHSIDE 10°.

CHANGES: EDITORIAL

RNLAF 24 FEB 2022

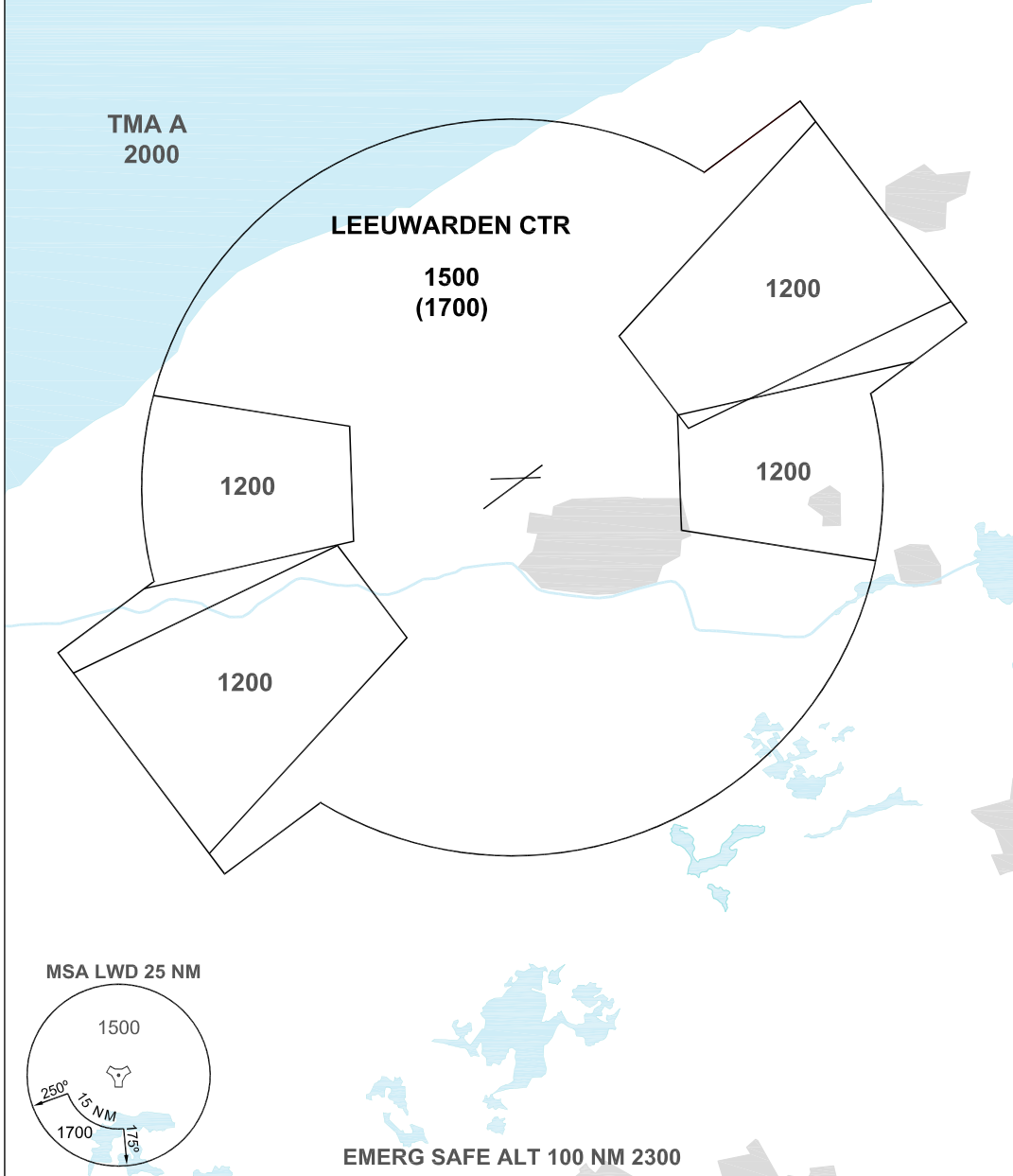


### LOCAL MAP



**MIPS** **MINIMUM VECTORING ALTITUDE** AD ELEV 4 **MVA CHART**  
**LEEUWARDEN (EHLW)**

DUTCH MIL 259.250 128.355	RAPCON NORTH 284.475 132.030	LEEUWARDEN TWR 344.850 120.705	GND CTL 362.525
------------------------------	---------------------------------	-----------------------------------	--------------------



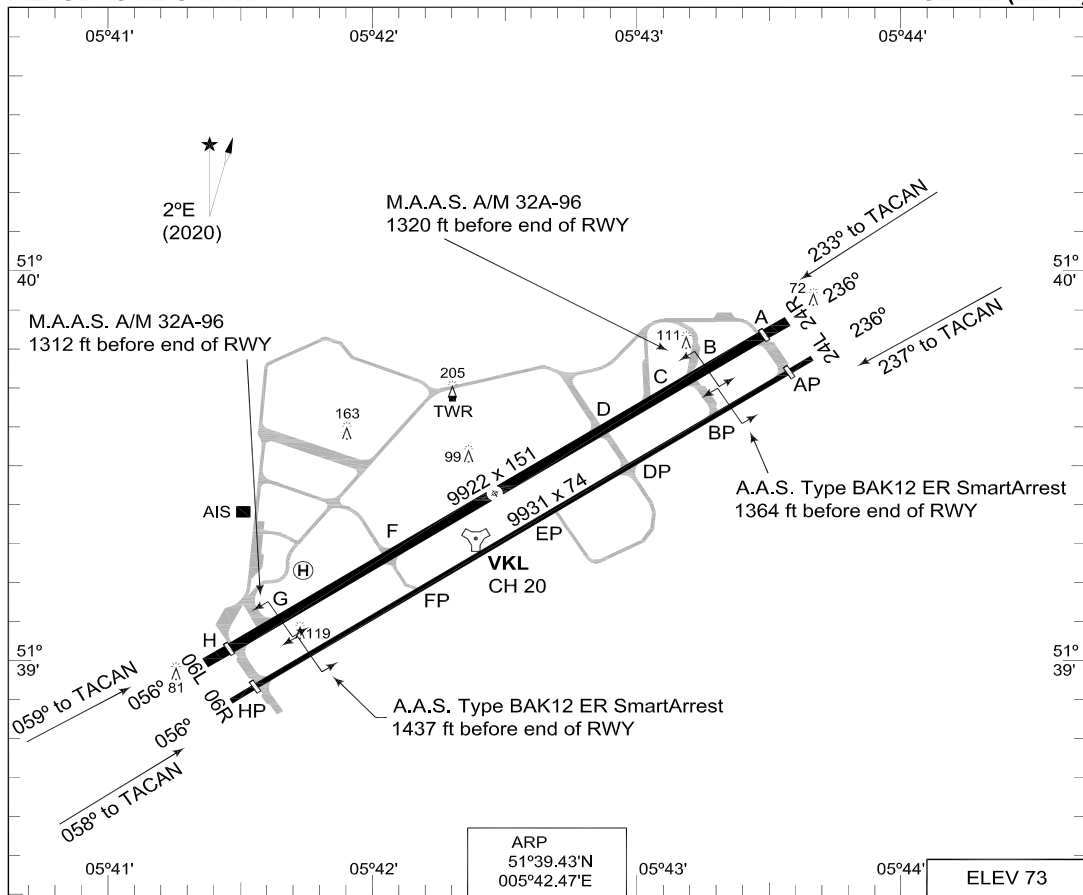
EMERG SAFE ALT 100 NM 2300

- THE ALTITUDE BETWEEN BRACKETS IS TO BE USED FOR THE CORRESPONDING SECTOR WHEN AIR TEMPERATURE AT AIRBASE ALTITUDE IS LOWER THAN -16°.
- ALTITUDES ONLY AVAILABLE IF THE RADAR COVERAGE PERMITS.

CHANGES: MSA

RNLAF 24 FEB 2022

MIPS AERODROME CHART VOLKEL (EHVK)



RWY	PCN	TORA	ASDA	TODA	LDA	PAPI	THR ELEV	THR PSN
24R	30 R/B/W/T	9922	9922	9922	9498	3.0°	62	51°39.83'N 005°43.49'E
06L	30 R/B/W/T	9922	9922	9922	9500	3.0°	72	51°39.04'N 005°41.45'E
24L	27 R/B/W/T	9931	9931	9931	9487	3.0°	62	51°39.73'N 005°43.58'E
06R	27 R/B/W/T	9931	9931	9931	9485	3.0°	73	51°38.94'N 005°41.55'E

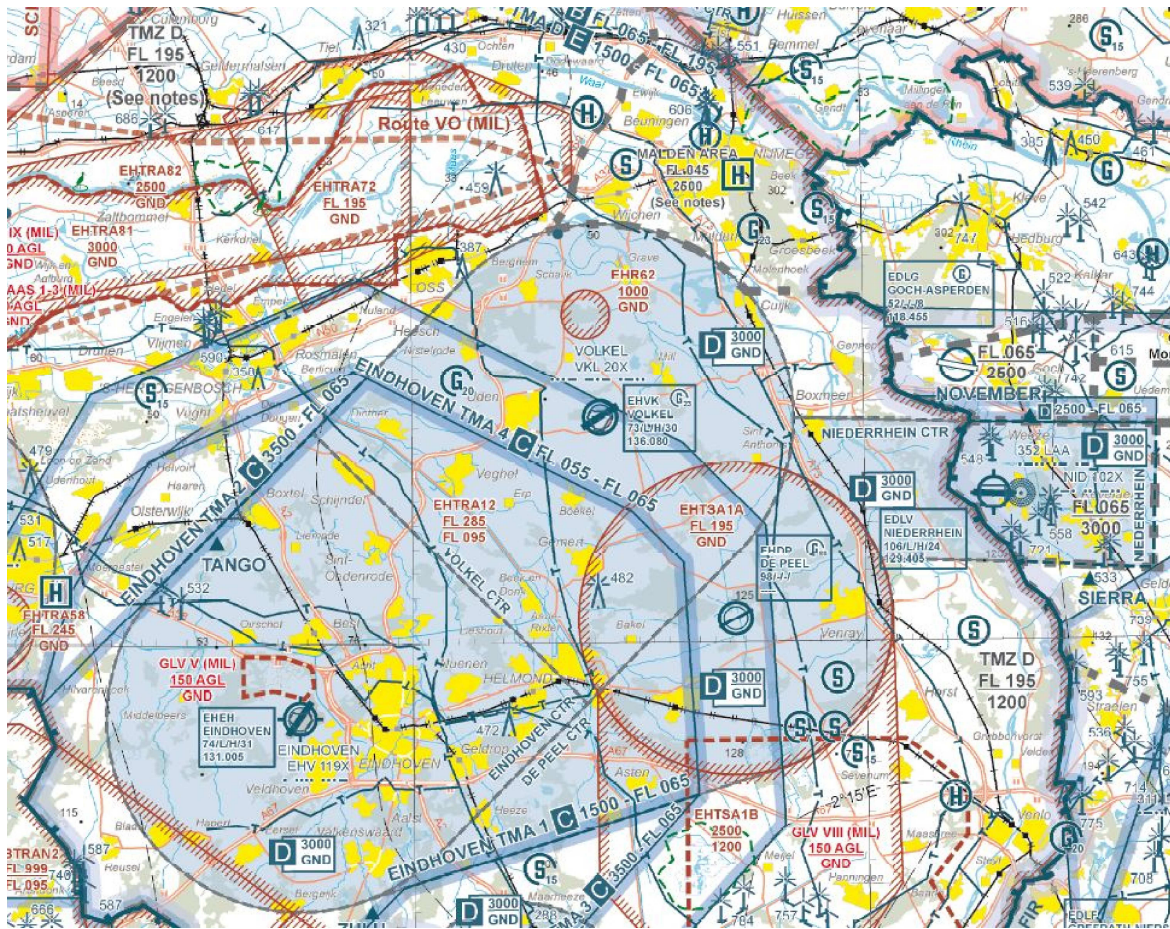
\* SWY 24L PCN 16 R/B/W/T, SWY 06R 17 R/B/W/T  
 VOLKEL TWR 291.100 136.080 (Ground Control) 386.775  
 VOLKEL ARRIVAL 291.200  
 RAPCON SOUTH 388.525 123.180

SRA	PROC. CRITERIA	RWY	GS	TCH	OTCH	RPI	CAT	MINIMA CRITERIA	MINIMA
MIPS	MIPS	24R					AB	MIPS	500-1100 438 (500-1.1/1.9)
							C		500-1200 438 (500-1.2/2.0)
							DE		500-1600 438 (500-1.6/2.4)
									500-2000 438 (500-2.0/2.4)
MIPS	MIPS	24L					AB	MIPS	500-1500 438 (500-1.5/1.9)
							C		500-1600 438 (500-1.6/2.0)
							DE		500-2000 438 (500-2.0/2.4)
									500-2400 438 (500-2.4/2.8)
MIPS	MIPS	06L					AB	MIPS	430-1100 358 (400-1.1/1.9)
							C		430-1200 358 (400-1.2/1.9)
							DE		430-1200 358 (400-1.2/2.0)
									430-1500 358 (400-1.5/1.9)
MIPS	MIPS	06R					AB	MIPS	640-1500 567 (600-1.5/1.9)
							C		640-2000 567 (600-2.0/2.4)
							D		640-2400 567 (600-2.4/2.8)
							E		640-2800 567 (600-2.8/3.2)

CHANGES: VOLKEL TWR FREQ. RENAME ARRESTING GEAR RWY 06R/24L

RNLAF 30 DEC 2021

### LOCAL MAP



## EHWO AD 2.8 Aprons, taxiways and check locations/positions data

1	Apron surface and strength	Visitors apron: concrete , PCN 77 R/C/W/T EMVO apron: tarmac, PCN 62 F/A/W/T LCW apron: concrete, PCN 47 R/C/W/T
2	TWY width, surface and strength	TWY A: Width 15 m, tarmac, PCN 38 F/A/W/T TWY B: Width 22,5 m, tarmac/concrete, PCN 34 R/C/W/T TWY B1: Width 15 m, tarmac/concrete, PCN 48 R/C/W/T TWY B2: Width 11,9 m, tarmac/concrete, PCN 10 F/A/W/T TWY B3: Width 12 m, concrete, PCN 61 R/C/W/T TWY B4: Width 11,9 m, concrete, PCN 40 R/C/W/T TWY C: Width 14,8 m, tarmac, PCN 44 F/A/W/T TWY C1: Width 20 m, concrete, PCN 51 R/C/W/T TWY C2: Width 12 m, tarmac/concrete, PCN 32 R/C/W/T TWY C3: Width 12 m, tarmac/concrete, PCN 26 F/A/W/T TWY C4: Width 20 m, concrete, PCN 53 R/C/W/T TWY D: Width 12 m, tarmac/concrete, PCN 49 F/A/W/T
3	Remarks	TWY marking is general and not based on any ACFT type. Use caution when taxiing on intersections TWY B 2: only to be used by ACFT with ACN 10 or less TWY C: obstacle TACAN building 24,5 m from TWY centreline Compass swing area: concrete, PCN 34 R/C/W/T

## EHWO AD 2.9 Surface movement guidance and control system and markings

According STANAG 3158		
1	Remarks	Nil

## EHWO AD 2.10 Aerodrome obstacles

See Aerodrome Chart
---------------------

### EHWO AD 2.11 Meteorological information provided

1	Associated MET Office	Woensdrecht
2	Hours of service MET Office outside hours	HO Joint Meteorological Group
3	Office responsible for TAF preparation Periods of validity	Joint Meteorological Group 12 hrs
4	Type of landing forecast Interval of issuance	TREND Every 30 min during opr hrs
5	Flight documentation Language(s) used	Reports, forecasts and charts. English and Dutch.
6	Charts and other information AVBL for briefing or consultation	GSA, GSP, LGF, Cross section, Upperair forecasts, NVG, Radar- and Satellite Images
7	Supplementary equipment AVBL for providing information	PBS (pilot briefing system)
8	Remarks	Tel EHWO 0164-692268 Tel JMG 0164-693111 or mail JMG.WX.PLANNING@mindef.nl

### EHWO AD 2.12 Runway physical characteristics

1	RWY dimensions/a-gear	See Aerodrome Chart. Values in ft.
2	RWY surface	Tarmac/concrete
3	RWY strength	PCN: 51 R/C/W/T

### EHWO AD 2.13 Declared distances

See Aerodrome Chart. Values in ft.
------------------------------------

### EHWO AD 2.14 Approach and runway lighting

According STANAG 3316		
1	Approach lighting	RWY 25: CAT I. 900 m RWY 07: S-ALS 420 m
2	RWY lighting	RWY 07 VHI, RWY 25 VCL/VHI
3	PAPI	Situated on left side of both RWYs
4	Remarks	Nil



## EHWO AD 2.20 Local traffic regulations

### Glider- and Light ACFT flying

Glider- and modelflying outside OPR HR SR/SS.

## EHWO AD 2.21 Noise abatement procedures

To be developed.

## EHWO AD 2.22 Flight procedures

### IFR procedures

The IAP and SID procedures are established in accordance STANAG 3759 and AATCP-1.

### VFR procedures

#### APPROACH PROCEDURES:

Both circuits are to be flown to the north, R/H pattern for RWY 25 and L/H pattern for RWY 07. The part of the approach in the CTR towards IP shall be flown at 2000 ft. After passing IP descend to 1500 ft circuit altitude.

#### CIRCUIT ALTITUDES:

Overhead pattern: 1500 ft.

Rectangular pattern: 1000 ft.

HEL pattern: 500 ft.

#### INITIAL POINTS:

- IP RWY 07:                   WDT R-257/4,3NM  
51°25'41"N 004°14'03"E  
A collection of bridges over the Kreekrak.
- IP RWY 25:                   WDT R-072/3,3NM  
51°28'13"N 004°26'41"E  
A farm located west of the railway next to a line of trees between Wouwe Plantage and Essen.
- IP North (HEL only): WDT R-027/4,1NM  
51°30'29"N 004°23'38"E  
Exit 25 'Wouwe Plantage' of the highway A58

#### REPORTING POINTS:

- Kilo:                         WDT R-265/8NM  
51°26'08"N 004°07'32"E  
Triangular shaped beach north east of the village Krabbendijke.
- Victor:                       WDT R-329/8NM  
51°33'47"N 004°13'55"E  
Most southern point of a forest on the Easterly border of the channel east of the village Oud Vossemeer. A small triangular cove marks the south point of the forest.
- Romeo:                       WDT R-033/8NM  
51°33'27"N 004°27'26"E  
Four small lakes along the A17, west of Roosendaal, west of the industry park Borchwerf flyover nr 20 on the A17.
- Echo:                         WDT R-065/7,3NM  
51°29'57"N 004°31'19"E  
Triangular shaped cove in the forest southwest of Rucphense heide

### EHWO AD 2.23 Additional information

AIS Briefing office facility and the ATS Reporting Office (ARO) is only available through the Flight Data and Notam Office (FDNO) located at MilATCC Schiphol.

Tel: +31(0)20 4062840

Tel: +31(0)20 4062841

E-mail: aocs.fdns@mindef.nl

AFTN: EHMCPZPX  
avbl H24

PPR 24 HRS: for Prior Permission Request contact:  
Operations and Coordination Centre

TEL: +31(0)164-692365

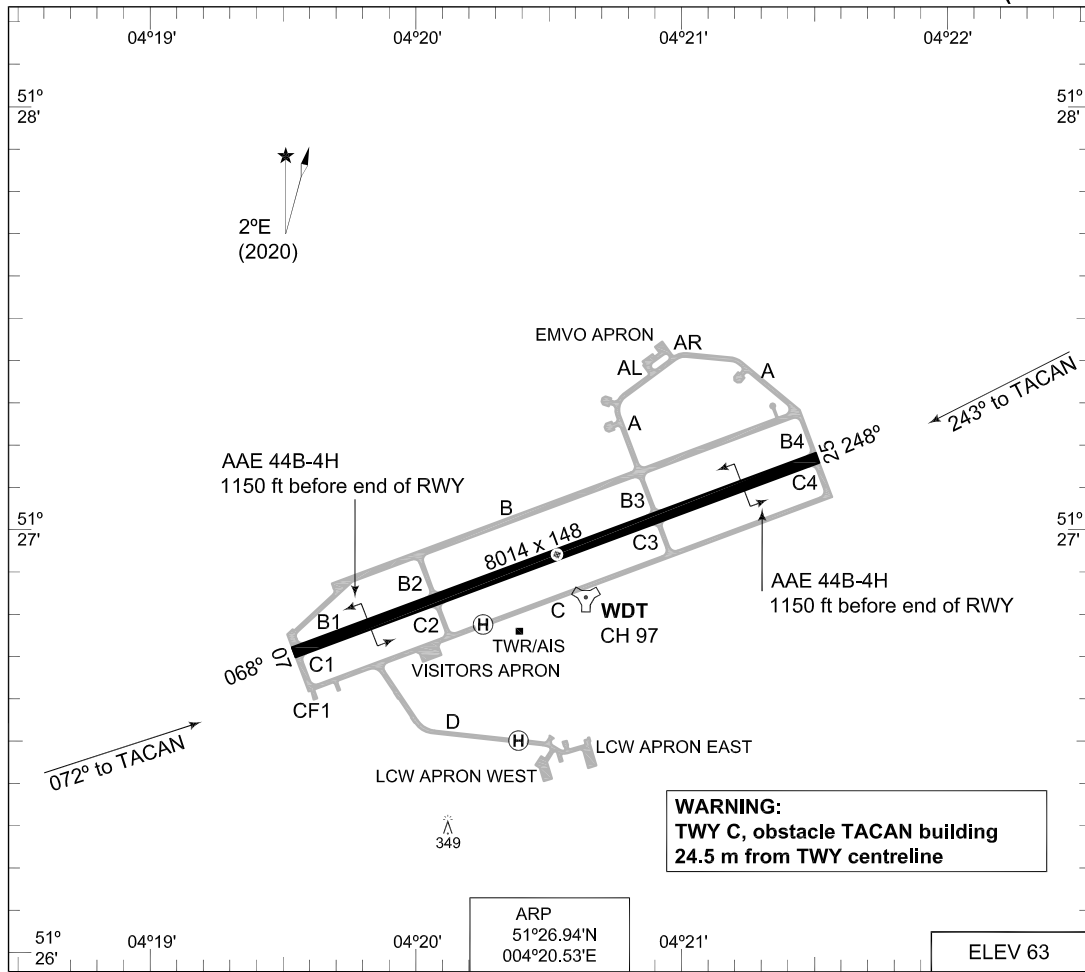
FAX: N.A.

EMAIL: KMSL.OCC@MINDEF.NL

### EHWO AD 2.24 Charts related to an aerodrome

Aerodrome Chart	EHWO AD 2-9
Local map	EHWO AD 2-10
MVA chart	EHWO AD 2-11
Instrument departure chart WO1	EHWO AD 2-12
Instrument departure chart WO3	EHWO AD 2-13
Instrument approach chart ILS or LOC RWY 07	EHWO AD 2-14
Instrument approach chart HI-TACAN RWY 07	EHWO AD 2-15
Instrument approach chart TACAN RWY 07	EHWO AD 2-16
Instrument approach chart ILS or LOC RWY 25	EHWO AD 2-17
Instrument approach chart HI-TACAN RWY 25	EHWO AD 2-18
Instrument approach chart TACAN RWY 25	EHWO AD 2-19

**MIPS AERODROME CHART** **WOENS DreCHT (EHWO)**



<p>WARNING: TWY C, obstacle TACAN building 24.5 m from TWY centreline</p>										
<p>ARP 51°26.94'N 004°20.53'E ELEV 63</p>										
RWY	PCN	TORA	ASDA	TODA	LDA		PAPI		TDZE	THR PSN
25	51 R/C/W/T	8014	8014	8014	8014		3.0°		63	51°27.17'N 004°21.51'E
07	51 R/C/W/T	8014	8014	8014	8014				39	51°26.71'N 004°19.54'E
		GROUND CONTROL		356.875	121.680					
		WOENS DreCHT TWR		339.000	120.430					
		RAPCON WEST		399.725	123.580					
		WOENS DreCHT ARRIVAL		370.650						
SRA	PROC. CRITERIA	RWY	GS	TCH	OTCH	RPI	CAT	MINIMA CRITERIA	MINIMA	
	MIPS	25					AB	MIPS	450-1100 387 (400-1.1)	
	MIPS	07					CDE	MIPS	450-1200 387 (400-1.2)	
							AB		600-1600 561 (600-1.6)	
							C		600-2400 561 (600-2.4)	
							D		600-2800 561 (600-2.8)	
							E		600-3200 561 (600-3.2)	

CHANGES: NEW APRON, TAXI TRACK, RWY INTERSECTION NAMES

RNLAF 14 JUL 2022

### LOCAL MAP

