

Koninklijke Luchtmacht
Staf CLSK
DO/AMO/SAOC
Postbus 8762
4820 BB BREDA
MPC 92 A BREDA

Rijswijk, 19 May 2020

AIRAC AMENDMENT 08/20

EFFECTIVE DATE 16 JUL 20

to the Military Aeronautical Information Publication
(vs 83-6100-004; pub. Nr. 010701)

1. The following changes to the MilAIP Netherlands have to be incorporated:

a. Handamendment:

None.

b. Page changes:

Remove old	Insert new	Remove old	Insert new	Remove old	Insert new
GEN 0.4-1	GEN 0.4-1	EHLW 2-7	EHLW 2-7		
GEN 0.4-5	GEN 0.4-5	up to	up to		
		EHLW 2-11	EHLW 2-11		
		EHLW 2-25	EHLW 2-25		
		EHLW 2-26	EHLW 2-26		
		EHLW 2-35	EHLW 2-35		
		EHLW 2-36	EHLW 2-36		

2. After completion:

a. destroy obsolete pages;

b. insert letter of promulgation before page GEN 0;

c. record the incorporation of this amendment on page GEN 0.2-1.

3. The following MIL NOTAM are incorporated:

None

Military Aviation Authority NLD
In order H-ALL

L.C.J. Cremers
Lt Colonel

GEN 0.4 CHECKLIST OF MIIAIP PAGES

PAGE	DATE		PAGE	DATE		PAGE	DATE
PART 1 - GENERAL (GEN)			GEN 1			2.2-6	12 NOV 2015
						2.3-1	18 AUG 2016
GEN 0			1.1-1	12 NOV 2015		2.3-2	30 JAN 2020
			1.1-2	12 NOV 2015		2.4-1	30 JAN 2020
0.1-1	12 NOV 2015		1.3-1	30 JAN 2020		2.4-2	12 NOV 2015
0.1-2	12 NOV 2015		1.3-2	12 NOV 2015		2.5-1	12 NOV 2015
0.1-3	07 DEC 2017		1.6-1	12 NOV 2015		2.5-2	12 NOV 2015
0.1-4	12 NOV 2015		1.6-2	30 JAN 2020		2.6-1	12 NOV 2015
0.2-1	23 APR 2020		1.6-3	30 JAN 2020		2.6-2	12 NOV 2015
0.2-2	30 JAN 2020		1.6-4	30 JAN 2020			
0.3-1	28 APR 2016		1.7-1	12 NOV 2015		GEN 3	
0.3-2	12 NOV 2015		1.7-2	30 JAN 2020			
0.4-1	16 JUL 2020		1.7-3	12 NOV 2015		3.1-1	30 JAN 2020
0.4-2	18 JUN 2020		1.7-4	12 NOV 2015		3.1-2	07 DEC 2017
0.4-3	27 FEB 2020		1.7-5	30 JAN 2020		3.1-3	02 JAN 2020
0.4-4	18 JUN 2020		1.7-6	12 NOV 2015		3.1-4	12 NOV 2015
0.4-5	16 JUL 2020					3.2-1	15 SEP 2016
0.4-6	18 JUN 2020		GEN 2			3.2-2	12 NOV 2015
0.5-1	12 NOV 2015					3.3-1	30 JAN 2020
0.5-2	12 NOV 2015		2.1-1	12 NOV 2015		3.3-2	30 JAN 2020
0.6-1	30 JAN 2020		2.1-2	12 NOV 2015		3.3-3	01 FEB 2018
0.6-2	06 DEC 2018		2.2-1	29 MAR 2018		3.3-4	12 NOV 2015
0.6-3	30 JAN 2020		2.2-2	13 OCT 2016		3.4-1	12 NOV 2015
0.6-4	30 JAN 2020		2.2-3	12 NOV 2015		3.4-2	12 NOV 2015
			2.2-4	12 NOV 2015		3.5-1	07 DEC 2017
			2.2-5	12 NOV 2015		3.5-2	01 FEB 2018

PAGE	DATE		PAGE	DATE		PAGE	DATE
3.5-3	12 NOV 2015		1.1-2	30 JAN 2020		1.10-3	11 OCT 2018
3.5-4	12 NOV 2015		1.1-3	30 JAN 2020		1.10-4	03 JAN 2019
3.5-5	12 NOV 2015		1.1-4	14 SEP 2017		1.11-1	03 JAN 2019
3.5-6	12 NOV 2015		1.1-5	30 JAN 2020		1.11-2	12 NOV 2015
3.6-1	30 JAN 2020		1.1-6	30 JAN 2020		1.12-1	30 JAN 2020
3.6-2	12 NOV 2015		1.1-7	25 MAY 2017		1.12-2	12 NOV 2015
3.6-3	18 AUG 2016		1.1-8	25 MAY 2017			
3.6-4	30 JAN 2020		1.2-1	18 JUN 2020		ENR 2	
			1.2-2	18 JUL 2019			
GEN 4			1.3-1	18 JUN 2020		2.1-1	12 NOV 2015
			1.3-2	18 JUN 2020		2.1-2	12 NOV 2015
4.1-1	12 NOV 2015		1.3-3	18 JUN 2020			
4.1-2	30 JAN 2020		1.3-4	12 NOV 2015		ENR 3	
			1.4-1	15 AUG 2019			
PART 2 EN-ROUTE (ENR)			1.4-2	12 NOV 2015		3.1-1	30 JAN 2020
			1.5-1	30 JAN 2020		3.1-2	12 NOV 2015
ENR 0			1.5-2	12 NOV 2015		3.5-1	12 NOV 2015
			1.6-1	18 JUN 2020		3.5-2	12 NOV 2015
0.6-1	21 MAY 2020		1.6-2	18 JUN 2020		3.5-3	12 NOV 2015
0.6-2	06 DEC 2018		1.6-3	18 JUN 2020		3.5-4	12 NOV 2015
0.6-3	30 JAN 2020		1.6-4	18 JUN 2020		3.5-5	12 NOV 2015
0.6-4	30 JAN 2020		1.7-1	12 NOV 2015		3.5-6	30 JAN 2020
0.6-5	30 JAN 2020		1.7-2	30 JAN 2020		3.5-7	30 JAN 2020
0.6-6	30 JAN 2020		1.8-1	12 OCT 2017		3.5-8	07 DEC 2017
			1.8-2	12 NOV 2015		3.5-9	07 DEC 2017
ENR 1			1.9-1	30 JAN 2020		3.5-10	07 DEC 2017
1.1-1	30 JAN 2020		1.9-2	12 OCT 2017		3.5-11	30 JAN 2020
			1.10-1	30 JAN 2020			
			1.10-2	12 OCT 2017			

PAGE	DATE		PAGE	DATE		PAGE	DATE
EHGR 2-14	27 FEB 2020		EHKD 2-20	18 JUN 2020		EHLW 2-20	21 MAY 2020
EHGR 2-15	27 FEB 2020		EHKD 2-21	18 JUN 2020		EHLW 2-21	21 MAY 2020
EHGR 2-16	27 FEB 2020		EHKD 2-22	18 JUN 2020		EHLW 2-22	21 MAY 2020
EHGR 2-17	27 FEB 2020		EHKD 2-23	18 JUN 2020		EHLW 2-23	21 MAY 2020
EHGR 2-18	27 FEB 2020		EHKD 2-24	18 JUN 2020		EHLW 2-24	21 MAY 2020
EHGR 2-19	27 FEB 2020		EHKD 2-25	18 JUN 2020		EHLW 2-25	16 JUL 2020
EHGR 2-20	27 FEB 2020		EHKD 2-26	18 JUN 2020		EHLW 2-26	16 JUL 2020
EHGR 2-21	27 FEB 2020		EHKD 2-27	18 JUN 2020		EHLW 2-27	21 MAY 2020
EHGR 2-22	12 NOV 2015		EHKD 2-28	18 JUN 2020		EHLW 2-28	21 MAY 2020
						EHLW 2-29	21 MAY 2020
EHKD 2-1	30 JAN 2020		EHLW 2-1	14 SEP 2017		EHLW 2-30	21 MAY 2020
EHKD 2-2	28 APR 2016		EHLW 2-2	26 MAR 2020		EHLW 2-31	21 MAY 2020
EHKD 2-3	20 JUN 2019		EHLW 2-3	23 JUN 2016		EHLW 2-32	21 MAY 2020
EHKD 2-4	28 APR 2016		EHLW 2-4	26 APR 2018		EHLW 2-33	21 MAY 2020
EHKD 2-5	05 DEC 2019		EHLW 2-5	05 DEC 2019		EHLW 2-34	21 MAY 2020
EHKD 2-6	30 JAN 2020		EHLW 2-6	12 NOV 2015		EHLW 2-35	16 JUL 2020
EHKD 2-7	23 APR 2020		EHLW 2-7	16 JUL 2020		EHLW 2-36	16 JUL 2020
EHKD 2-8	23 APR 2020		EHLW 2-8	16 JUL 2020		EHLW 2-37	21 MAY 2020
EHKD 2-9	23 APR 2020		EHLW 2-9	16 JUL 2020		EHLW 2-38	21 MAY 2020
EHKD 2-10	23 APR 2020		EHLW 2-10	16 JUL 2020		EHLW 2-39	21 MAY 2020
EHKD 2-11	23 APR 2020		EHLW 2-11	16 JUL 2020		EHLW 2-40	21 MAY 2020
EHKD 2-12	23 APR 2020		EHLW 2-12	18 JUN 2020			
EHKD 2-13	30 JAN 2020		EHLW 2-13	05 DEC 2019		EHVK 2-1	20 JUL 2017
EHKD 2-14	07 NOV 2019		EHLW 2-14	21 MAY 2020		EHVK 2-2	12 NOV 2015
EHKD 2-15	30 JAN 2020		EHLW 2-15	21 MAY 2020		EHVK 2-3	25 APR 2019
EHKD 2-16	18 JUN 2020		EHLW 2-16	21 MAY 2020		EHVK 2-4	12 OCT 2017
EHKD 2-17	27 FEB 2020		EHLW 2-17	21 MAY 2020		EHVK 2-5	05 DEC 2019
EHKD 2-18	07 NOV 2019		EHLW 2-18	21 MAY 2020		EHVK 2-6	12 NOV 2015
EHKD 2-19	18 JUN 2020		EHLW 2-19	21 MAY 2020		EHVK 2-7	30 JAN 2020

EHVK 2-8	08 DEC 2016						
EHVK 2-9	18 JUN 2020						
EHVK 2-10	15 SEP 2016						
EHVK 2-11	27 FEB 2020						
EHVK 2-12	27 FEB 2020						
EHVK 2-13	27 FEB 2020						
EHVK 2-14	27 FEB 2020						
EHVK 2-15	27 FEB 2020						
EHVK 2-16	27 FEB 2020						
EHVK 2-17	27 FEB 2020						
EHVK 2-18	27 FEB 2020						
EHVK 2-19	27 FEB 2020						
EHVK 2-20	27 FEB 2020						
EHWO 2-1	14 SEP 2017						
EHWO 2-2	12 NOV 2015						
EHWO 2-3	12 NOV 2015						
EHWO 2-4	25 MAY 2017						
EHWO 2-5	18 JUN 2020						
EHWO 2-6	07 NOV 2019						
EHWO 2-7	30 JAN 2020						
EHWO 2-8	05 DEC 2019						
EHWO 2-9	12 NOV 2015						
EHWO 2-10	27 FEB 2020						
EHWO 2-11	27 FEB 2020						
EHWO 2-12	27 FEB 2020						
EHWO 2-13	27 FEB 2020						
EHWO 2-14	27 FEB 2020						
EHWO 2-15	27 FEB 2020						
EHWO 2-16	27 FEB 2020						
EHWO 2-17	27 FEB 2020						
EHWO 2-18	12 NOV 2015						

b. DEPARTING:

- after take off climb ASAP to at least 1000 ft AGL;
- (if possible) use of afterburner to be terminated before reaching Marssum (end of RWY 23) or Jelsum (end of RWY 05);
- low level departures: after take off straight ahead to at least 1500 ft AGL before turning on course;
- high level departures: only SIDs are allowed;
- afterburner climbouts are not permitted.

EHLW AD 2.22 Flight procedures**IFR procedures**

The IAP and SID procedures are established in accordance with STANAG 3759 AND AATCP-1.

RNP Y approach RWY 05

Serial Number	Path Descriptor	WPT Ident	Fly Over	Course Mag°/(T°)	Recom navaid	Dist nm	turn	Altitude (ft AMSL)	Speed (KIAS)	VPA(° TCH (ft)	NAV spec
001	IF	DUTCU	-	-	-	-	-	+ 1500	-	-	-
002	TF	BOCOC	-	144 (145)	-	3	-	+ 1500	-	-	RNAV1
003	IF	TOHAR	-	-	-	-	-	+ 1500	-	-	-
004	TF	BOCOC	-	054 (055)	-	3	-	+ 1500	-	-	RNAV1
005	IF	VEFKI	-	-	-	-	-	+ 1500	-	-	-
006	TF	BOCOC	-	324 (325)	-	3	-	+ 1500	-	-	RNAV1
007	IF	BOCOC	-	-	-	-	-	+ 1500	-	-	-
008	TF	LW444	-	054 (055)	-	3	-	+ 1500	-	-	RNP APCH
009	TF	THR05	Y	054 (055)	-	3.7	-	-	-	-3.72/50	RNP APCH
010	CA	-	-	054 (055)	-	-	-	+1200	-	-	RNP APCH
011	DF	DUTCU	-	-	-	-	L	+ 1500	-	-	RNP APCH

FAS data block – RNP Y RWY 05

Input data	
Operation Type	0
SBAS Provider	1 (EGNOS)
Airport Identifier	EHLW
Runway	05
Runway Letter	0 (None)
Approach Performance Designator	0
Route Indicator	Y
Reference Path Data Selector	0
Reference Path Identifier	E05A
LTP/FTP Latitude	531308.9900N
LTP/FTP Longitude	0054416.0400E
LTP/FTP Ellipsoidal Height (metres)	42.6
FPAP Latitude	531358.5755N
Delta FPAP Latitude (seconds)	49.5855
FPAP Longitude	0054615.8275E
Delta FPAP Longitude (seconds)	119.7875
Threshold Crossing Height	50.0
TCH Units Selector	0 (feet)
Glidepath Angle (degrees)	3.72
Course Width (metres)	105.00
Length Offset (metres)	0
HAL (metres)	40.0
VAL (metres)	35.0

Output data	
Data Block	10 17 0C 08 05 05 C8 00 01 35 30 05 FC D4 D6 16 50 5F 76 02 AA 15 63 83 01 D7 A7 03 F4 01 74 01 64 00 C8 AF 28 A6 73 8E
Calculated CRC Value	28A6738E
Supplied CRC Value	28A6738E
Comparison Result	OK

Required Additional Data	
ICAO Code	LW
LTP/FTP Orthometric Height (metres)	1.2

NOTE: EUROCONTROL FAS DB tool Version 3.2.0

RNP Y approach RWY 23

Serial Number	Path Descriptor	WPT Ident	Fly Over	Course Mag°/(T°)	Recom navaid	Dist nm	turn	Altitude (ft AMSL)	Speed (KIAS)	VPA(° TCH (ft)	NAV spec
001	IF	IPCOL	-	-	-	-	-	+ 1500	-	-	-
002	TF	LIWOB	-	144 (145)	-	3	-	+ 1500	-	-	RNAV1
003	IF	XOZEP	-	-	-	-	-	+ 1500	-	-	-
004	TF	LIWOB	-	234 (235)	-	3	-	+ 1500	-	-	RNAV1
005	IF	RACLE	-	-	-	-	-	+ 1500	-	-	-
006	TF	LIWOB	-	324 (325)	-	3	-	+ 1500	-	-	RNAV1
007	IF	LIWOB	-	-	-	-	-	+ 1500	-	-	-
008	TF	LW434	-	234 (235)	-	3	-	+ 1500	-	-	RNP APCH
009	TF	THR23	Y	234 (235)	-	3.7	-	-	-	-3.72/50	RNP APCH
010	CA	-	-	234 (235)	-	-	-	+ 1200	-	-	RNP APCH
011	DF	IPCOL	-	-	-	-	R	+ 1500	-	-	RNP APCH

FAS data block – RNP Y RWY 23

Input data	
Operation Type	0
SBAS Provider	1 (EGNOS)
Airport Identifier	EHLW
Runway	23
Runway Letter	0 (None)
Approach Performance Designator	0
Route Indicator	Y
Reference Path Data Selector	0
Reference Path Identifier	E23A
LTP/FTP Latitude	531352.9500N
LTP/FTP Longitude	0054602.2300E
LTP/FTP Ellipsoidal Height (metres)	42.5
FPAP Latitude	531304.5415N
Delta FPAP Latitude (seconds)	-48.4085
FPAP Longitude	0054405.3015E
Delta FPAP Longitude (seconds)	-116.9285
Threshold Crossing Height	50.0
TCH Units Selector	0 (feet)
Glidepath Angle (degrees)	3.72
Course Width (metres)	105.00
Length Offset (metres)	0
HAL (metres)	40.0
VAL (metres)	35.0

Output data	
Data Block	10 17 0C 08 05 17 C8 00 01 33 32 05 6C 2C D8 16 EC 9C 79 02 A9 15 CF 85 FE 7F 6E FC F4 01 74 01 64 00 C8 AF 56 6E 17 51
Calculated CRC Value	566E1751
Supplied CRC Value	566E1751
Comparison Result	OK

Required Additional Data	
ICAO Code	EH
LTP/FTP Orthometric Height (metres)	1.2

NOTE: EUROCONTROL FAS DB tool Version 3.2.0

VFR procedures

CONVENTIONAL ACFT:

Join R/H - or L/H baseleg for RWY in use as directed by ATC.

LIGHT ACFT/HEL:

Join circuit from the south at 600 ft. This altitude is to be reached at a distance of at least 5 NM from the AD. Departure from the AD to be carried out in a southern direction at 600 ft. In both the landing pattern and after take off RWYs 05/23 and 09/27 are not to be crossed.

EHLW AD 2.23 Additional information

AIS Briefing office facility and the ATS Reporting Office (ARO) is only available through the Flight Data and Notam Office (FDNO) located at MilATCC Schiphol.

Tel: +31(0)20 4062840

Tel: +31(0)20 4062841

E-mail: aocs.fdns@mindef.nl

AFTN: EHMCZPZX

avbl H24

PPR 24 HRS: for Prior Permission Request contact:

Leeuwarden AB

Operational Centre

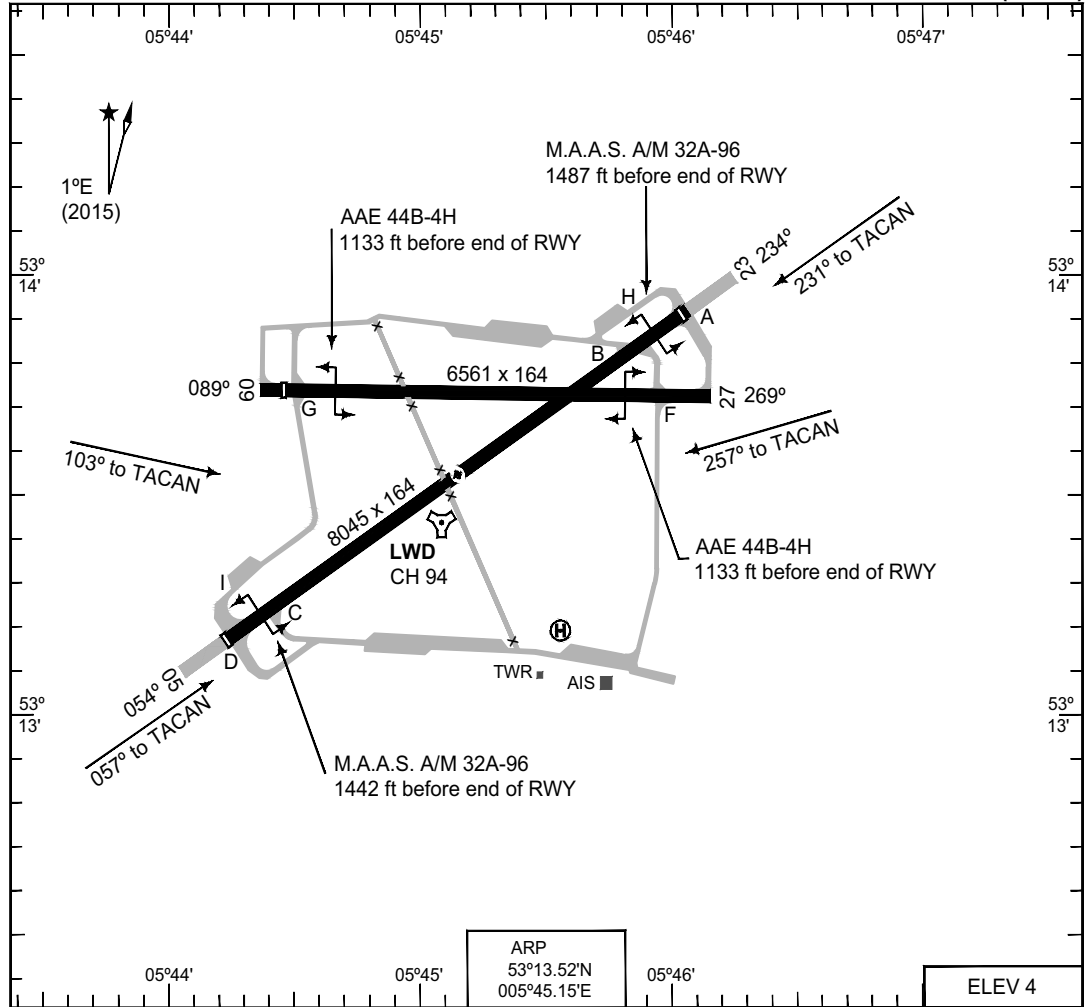
Tel: +31(0)58 2346004/6006

E-mail: LW.IPCC.Daily.Ops@mindef.nl

EHLW AD 2.24 Charts related to an aerodrome

Aerodrome Chart	EHLW AD 2-12
Local map	EHLW AD 2-13
Aerodrome obstacle chart RWY 05-23	EHLW AD 2-14
Aerodrome obstacle chart RWY 09-27	EHLW AD 2-15
Instrument departure chart LW1	EHLW AD 2-16
Instrument departure chart LW3	EHLW AD 2-17
Instrument departure chart LW5	EHLW AD 2-18
Instrument departure chart LW7	EHLW AD 2-19
Instrument approach chart ILS or LOC RWY 05	EHLW AD 2-20
Instrument approach chart HI-TACAN RWY 05	EHLW AD 2-21
Instrument approach chart TACAN RWY 05	EHLW AD 2-22
Instrument approach chart COPTER ILS or LOC 054	EHLW AD 2-23
Instrument approach chart COPTER TACAN 057	EHLW AD 2-24
Instrument approach chart RNP Z RWY 05	EHLW AD 2-25
Instrument approach chart RNP Y RWY 05	EHLW AD 2-26
Instrument approach chart ILS or LOC RWY 09	EHLW AD 2-27
Instrument approach chart HI-TACAN RWY 09	EHLW AD 2-28
Instrument approach chart TACAN RWY 09	EHLW AD 2-29
Instrument approach chart ILS or LOC RWY 23	EHLW AD 2-30
Instrument approach chart HI-TACAN RWY 23	EHLW AD 2-31
Instrument approach chart TACAN RWY 23	EHLW AD 2-32
Instrument approach chart COPTER ILS or LOC 234	EHLW AD 2-33
Instrument approach chart COPTER TACAN 231	EHLW AD 2-34
Instrument approach chart RNP Z RWY 23	EHLW AD 2-35
Instrument approach chart RNP Y RWY 23	EHLW AD 2-36
Instrument approach chart ILS or LOC RWY 27	EHLW AD 2-37
Instrument approach chart HI-TACAN RWY 27	EHLW AD 2-38
Instrument approach chart TACAN RWY 27	EHLW AD 2-39

MIPS AERODROME CHART **LEEUWARDEN (EHLW)**



RWY	PCN	TORA	ASDA	TODA	LDA	PAPI	THR ELEV	THR PSN
23	64 F/B/W/T	8045	8045	8832	7863	3.0°	4	53°13.88'N 005°46.04'E
05	64 F/B/W/T	8045	8045	8865	8036	3.0°	4	53°13.15'N 005°44.27'E
27	52 F/B/W/T	6561	6561	6561	6561		3	53°13.71'N 005°46.18'E
09	52 F/B/W/T	6561	6561	6561	6368		3	53°13.71'N 005°44.44'E

LEEUWARDEN TWR	344.850	120.705	(Ground Control)	362.525
LEEUWARDEN ARRIVAL	339.700			
RAPCON NORTH	284.475	132.030		

	PROC. CRITERIA	RWY	GS	TCH	OTCH	RPI	CAT	MINIMA CRITERIA	MINIMA
SRA	MIPS	23					AB	MIPS	450-1100 446 (500-1.1/1.9)
							C		450-1200 446 (500-1.2/2.0)
							D		450-1600 446 (500-1.6/2.4)
							E		450-2000 446 (500-2.0/2.8)
	MIPS	05					AB	MIPS	470-1100 446 (500-1.1/1.9)
							C		470-1200 446 (500-1.2/2.0)
							D		470-1600 446 (500-1.6/2.4)
							E		470-2000 446 (500-2.0/2.8)
	MIPS	27					AB	MIPS	420-1900 417 (500-1.9/1.9)
							CD		420-2000 417 (500-2.0/2.0)
							E		420-2400 417 (500-2.4/2.4)
	MIPS	09					AB	MIPS	460-1900 458 (500-1.9/1.9)
C							460-2000 458 (500-2.0/2.0)		
DE							460-2400 458 (500-2.4/2.4)		

CHANGES: NAME ARRESTING SYSTEM RWY 05/23

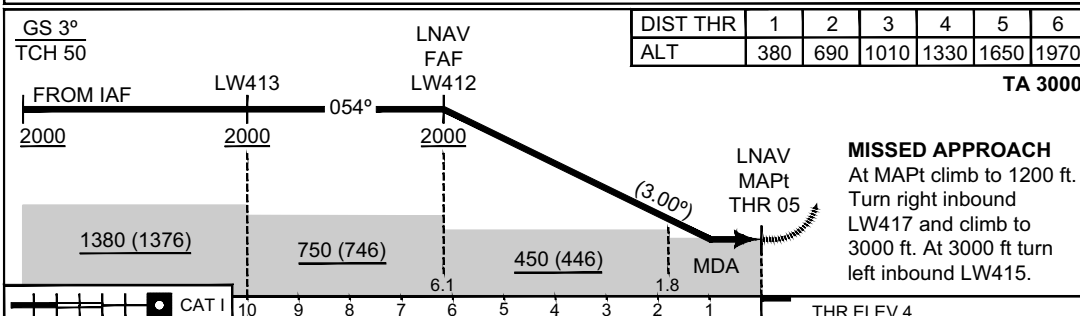
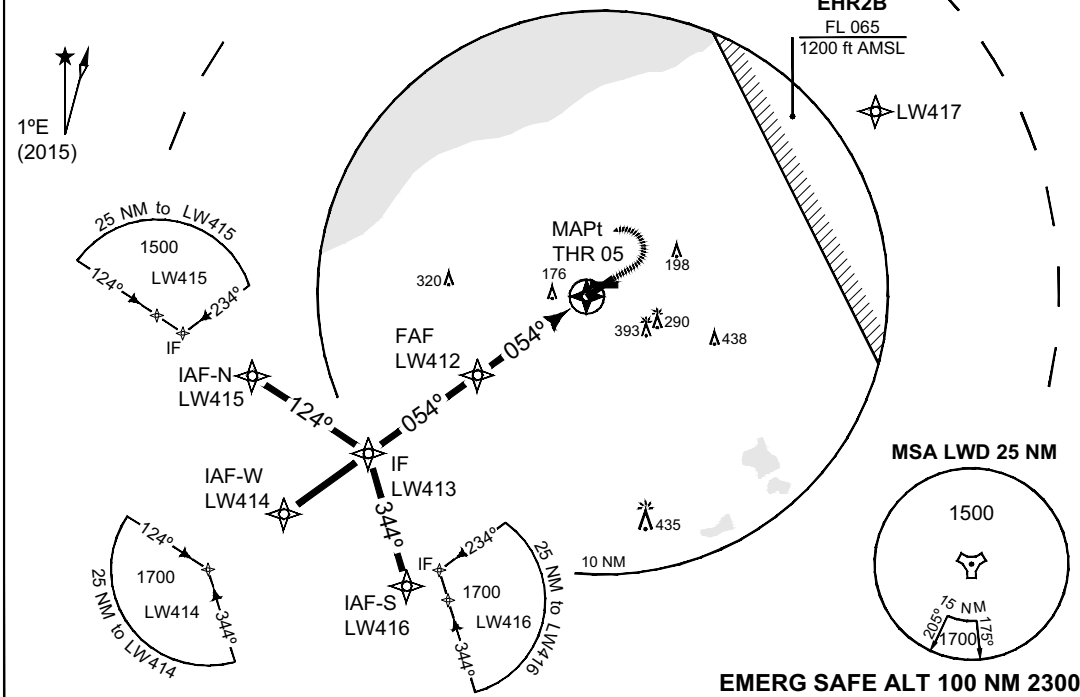
RNLAF 18 JUN 2020

PANS OPS INSTRUMENT APPROACH CHART **RNP Z RWY 05 LEEUWARDEN (EHLW)**

DUTCH MIL 397.275 128.355		RAPCON NORTH 284.475 132.030		LEEUWARDEN TWR 344.850 120.705		GND CTL 362.525	
EGNOS CHANNEL	APP COURSE 054°	FAF ALT 2000 FT	Descent GR 5.24% / 3°	MDA 380	DA SEE CAT	THR ELEV 4	LDA 8036 FT

NOTE:

- a) ALL DISTANCES ARE RELATED TO THRESHOLD
- b) MINIMUM TEMPERATURE -20°



CATEGORY	A	B	C	D
DA(H) LPV	N.A.			
DA(H) LNAV / VNAV	N.A.			
MDA(H) LNAV	380-1300 376 (400-1.3/1.7)			

IAF-N	LW415	53°10.34'N	005°23.82'E	FAF	LW412	53°09.68'N	005°35.91'E
IAF-W	LW414	53°04.61'N	005°23.80'E	MAPt	THR05	53°13.15'N	005°44.27'E
IAF-S	LW416	53°02.64'N	005°32.72'E	MATF	LW417	53°23.00'N	006°10.44'E
IF	LW413	53°07.47'N	005°30.61'E				

CHANGES: PROCEDURE NAME

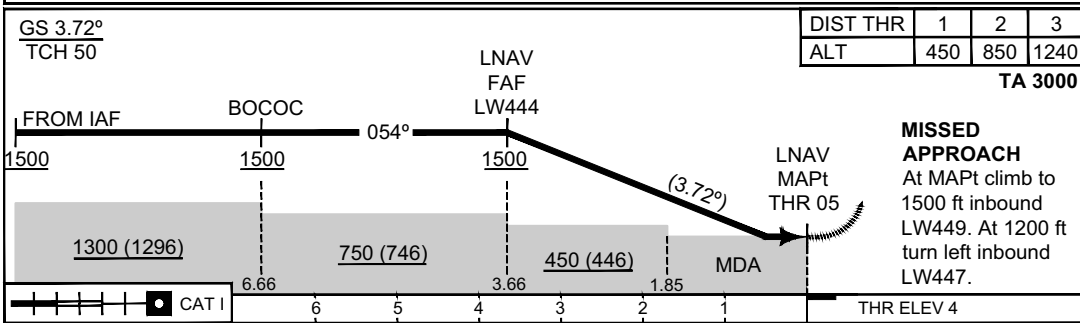
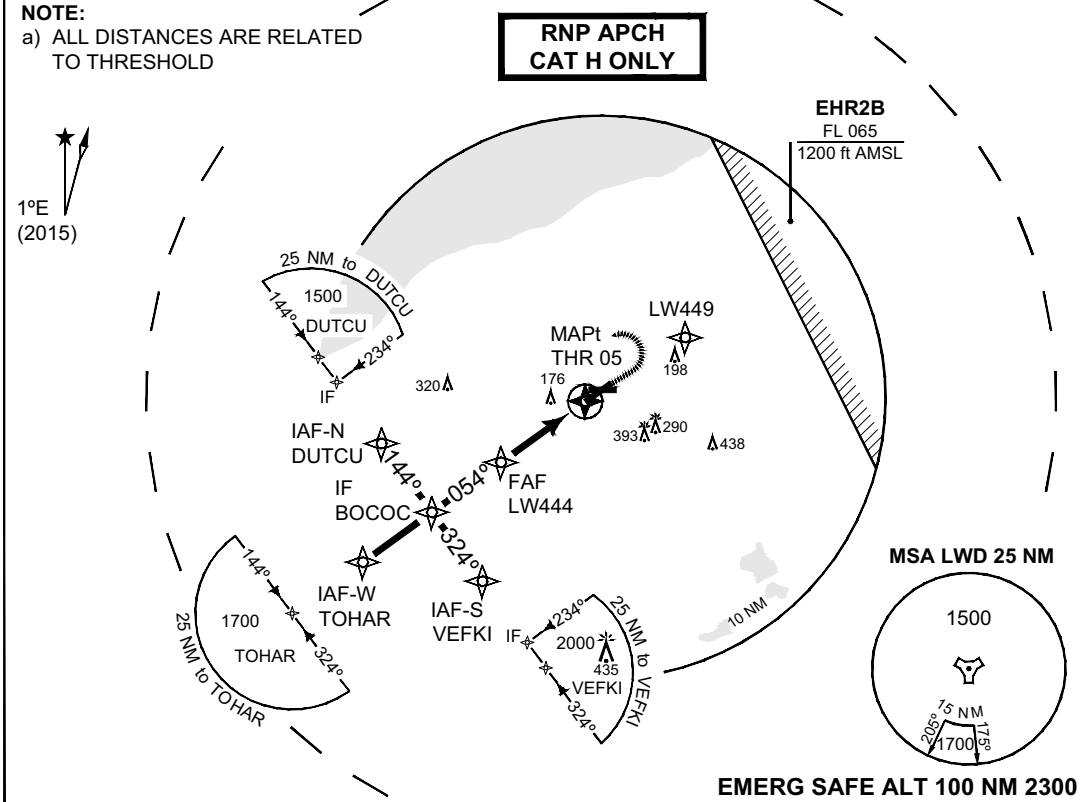
RNLAF 16 JUL 2020

PANS OPS INSTRUMENT APPROACH CHART **RNP Y RWY 05 LEEUWARDEN (EHLW)**

DUTCH MIL 397.275 128.355		RAPCON NORTH 284.475 132.030		LEEWARDEN TWR 344.850 120.705		GND CTL 362.525	
EGNOS CHANNEL 67430 E05A	APP COURSE 054°	FAF ALT 1500 FT	Descent GR 6.5% / 3.72°	MDA 380	DA 204	THR ELEV 4	LDA 8036 FT

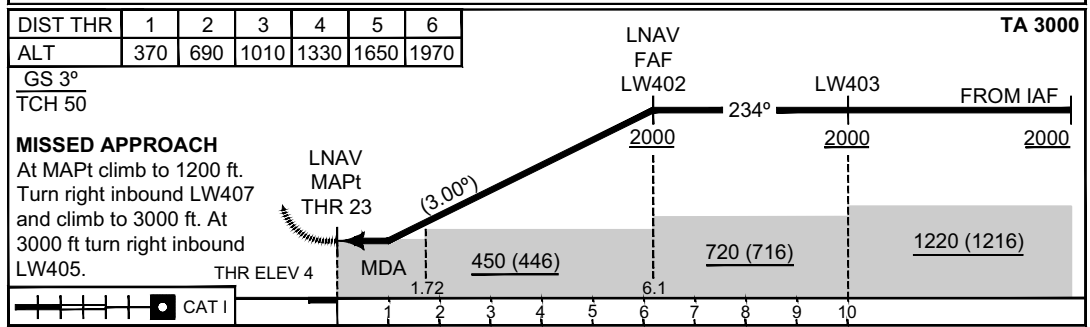
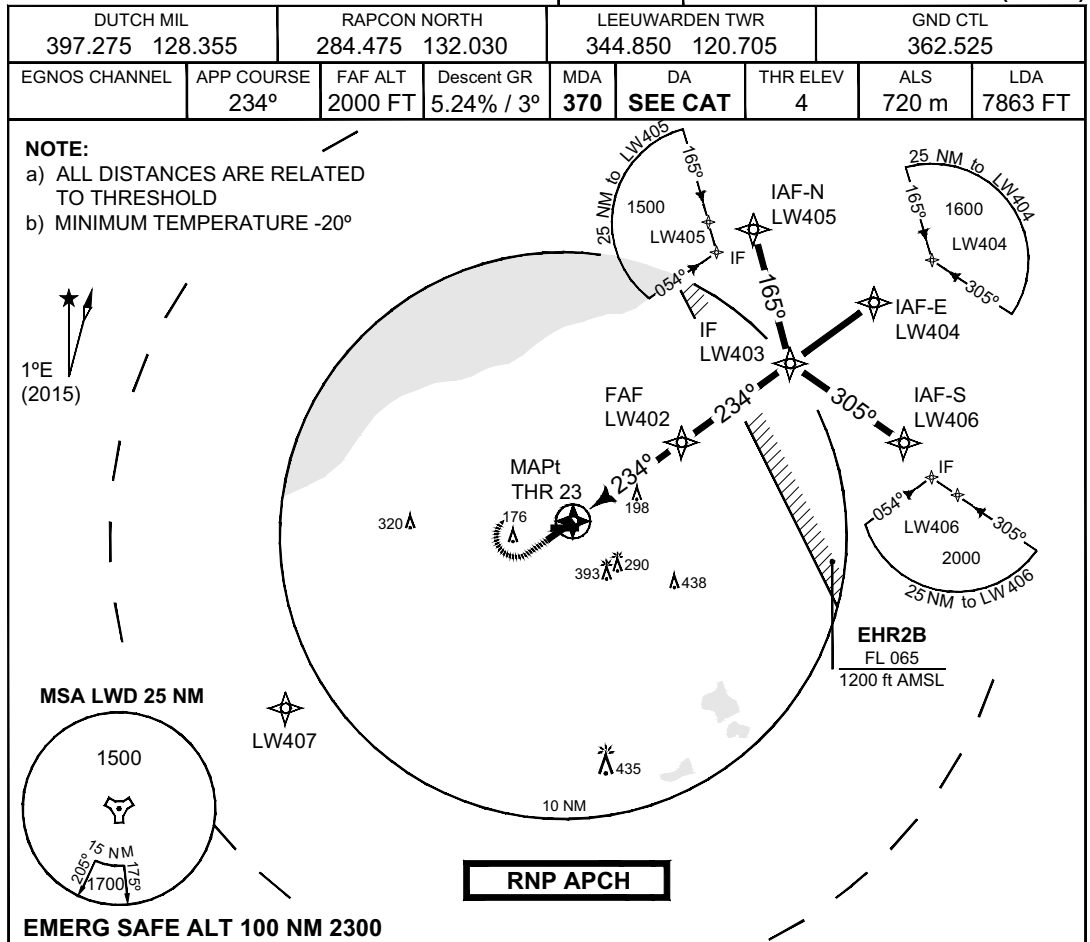
NOTE:

a) ALL DISTANCES ARE RELATED TO THRESHOLD



CATEGORY		H					
MIPS	DA(H) LPV	204-400 200 (200-0.4/1.2)					
	DA(H) LNAV / VNAV	N.A.					
	MDA(H) LNAV	380-1300 376 (400-1.3/1.7)					
IAF-N	DUTCU	53°11.83'N	005°32.32'E	FAF	LW444	53°11.07'N	005°39.26'E
IAF-W	TOHAR	53°07.66'N	005°31.07'E	MAPt	THR05	53°13.15'N	005°44.27'E
IAF-S	VEFKI	53°06.90'N	005°38.00'E	MATF	LW449	53°15.52'N	005°50.01'E
IF	BOCOC	53°09.37'N	005°35.16'E				

PANS OPS INSTRUMENT APPROACH CHART AD ELEV 4 **RNP Z RWY 23**
LEEWARDEN (EHLW)



CHANGES: PROCEDURE NAME	CATEGORY		A		B		C		D	
	DA(H)	LPV	N.A.							
	DA(H)	LNAV / VNAV	N.A.							
	MDA(H)	LNAV	370-1000 366 (400-1.0/1.7)							
	IAF-N	LW405	53°24.36'N	005°57.71'E	FAF	LW402	53°17.34'N	005°54.42'E		
	IAF-E	LW404	53°22.35'N	006°06.65'E	MAPt	THR23	53°13.88'N	005°46.04'E		
	IAF-S	LW406	53°16.61'N	006°06.56'E	MATF	LW407	53°03.94'N	005°20.04'E		
	IF	LW403	53°19.54'N	005°59.77'E						

**PANS OPS
INSTRUMENT APPROACH CHART**

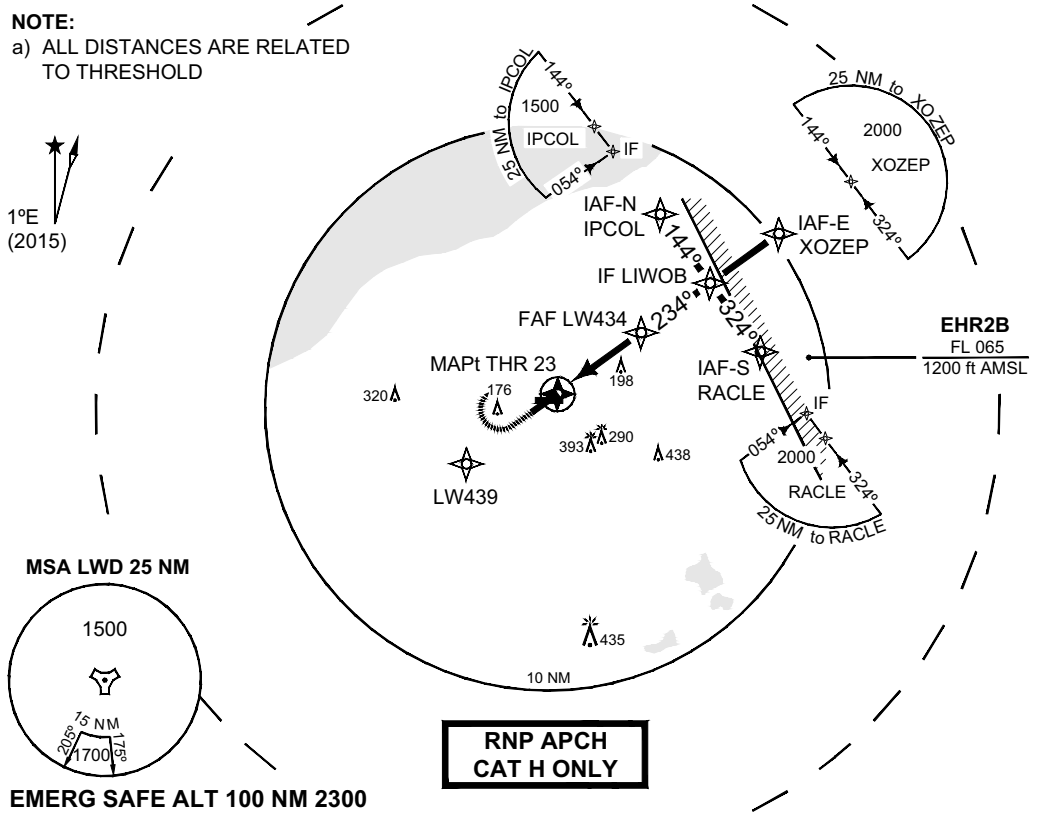
**RNP Y RWY 23
LEEWARDEN (EHLW)**

AD ELEV 4

DUTCH MIL 397.275 128.355		RAPCON NORTH 284.475 132.030		LEEWARDEN TWR 344.850 120.705		GND CTL 362.525		
EGNOS CHANNEL 92974 E23A	APP COURSE 234°	FAF ALT 1500 FT	Descent GR 6.5% / 3.72°	MDA 370	DA 204	THR ELEV 4	ALS 720 m	LDA 7863 FT

NOTE:

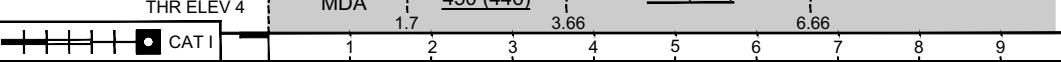
a) ALL DISTANCES ARE RELATED TO THRESHOLD



DIST THR	1	2	3	GS 3.72°	TA 3000
ALT	450	850	1240	TCH 50	

MISSED APPROACH

At MAPt climb to 1500 ft inbound LW439. At 1200 ft turn right inbound LW437.



CATEGORY	H	
DA(H) LPV	204-400 200 (200-0.4/1.2)	
DA(H) LNAV / VNAV	N.A.	
MDA(H) LNAV	370-1000 366 (400-1.0/1.7)	

IAF-N	IPCOL	53°20.12'N	005°52.34'E	FAF	LW434	53°15.95'N	005°51.06'E
IAF-E	XOZEP	53°19.35'N	005°59.30'E	MAPt	THR23	53°13.88'N	005°46.04'E
IAF-S	RACLE	53°15.18'N	005°58.00'E	MATF	LW439	53°11.51'N	005°40.30'E
IF	LIWOB	53°17.65'N	005°55.18'E				

CHANGES: PROCEDURE NAME

RNLAF 16 JUL 2020