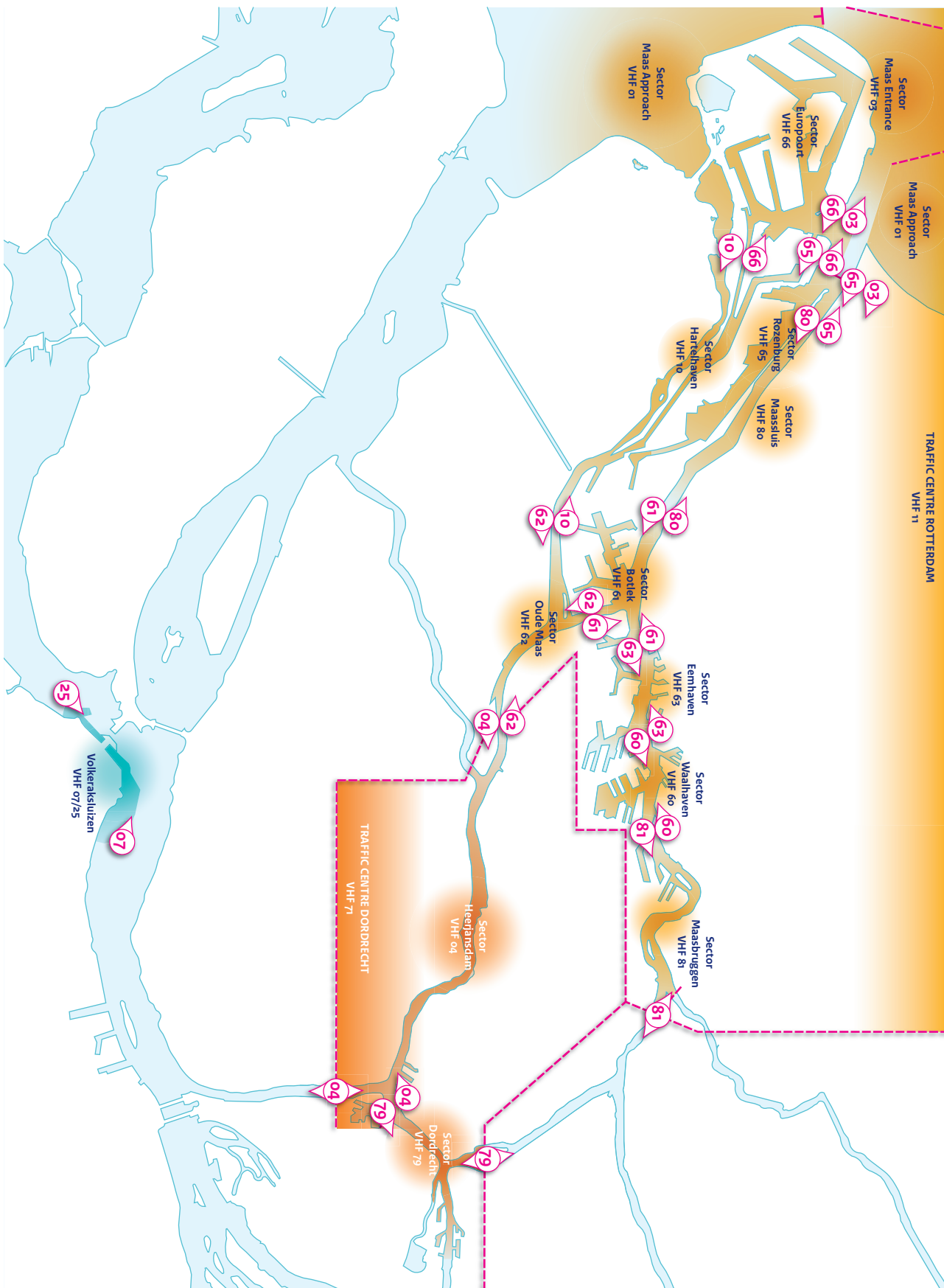


Behoort bij BaZ nr 70/20 *Belongs to NL NtM 70/20*

Delete Chapter 9.4.4 (illustration) and replace by:



Behoort bij BaZ nr 70/20 Belongs to NL NtM 70/20

Delete table 9.4.1.6 and replace by:

9.4.1.6	<i>Transit</i>
Who	All vessels, except vessels with a length of 20m or less, which are located in the VTS areas.
To	Traffic Centres
What	A - D - X5
When	When crossing a VTS sector boundary.
Remarks	See also section 9.4.3 'Explanation of codes'.