



Koninklijke Marine

BaZ | 2013

14 | BAZ 157-163

Berichten aan Zeevarenden
Netherlands Notice to Mariners



Netherlands Hydrographic Office

BAZ	038/11	1/1	NL Chart
Previous BAZ	580/10		Weekly

51-26.00 N

000-20.00 E

Carolusbankje

move
↓

insert
→

Paardenmar

Appelzoo

138^e jaargang 4-4-2013

Dienst der Hydrografie

Erkende verkoopagenten van Nederlandse Hydrografische publicaties (Resellers licenced to distribute Netherlands Nautical Publications)

De Berichten aan Zeevarenden (BaZ) verschijnen wekelijks en zijn te verkrijgen:

- als printversie (PDF) via internet <http://www.defensie.nl/marine/hydrografie/baz/baz-database>
- via de Database <http://www.defensie.nl/marine/hydrografie/baz/week-editie/>
- als boekje (tegen betaling) bij een aantal A-agenten.
- de catalogus vindt u op http://www.defensie.nl/marine/hydrografie/nautische_producten/boekwerken

A-agenten: (bijgewerkte kaarten)

- Amsterdam: **Datema Amsterdam**, Prins Hendrikkade 176/50, 1011 TC Amsterdam,
Tel +31 (0)20 - 4277727; Fax. +31 (0)20 - 4279566;
Internetpagina: www.datema-Amsterdam.nl ; e-mail: datema-amsterdam@planet.nl
- Amsterdam: **L.J. Harri BV**, Prins Hendrikkade 94/95 "Schreierstoren", 1012 AE Amsterdam,
Tel. +31 (0)20 - 6248052; Fax. +31 (0)20 - 6258086;
Internetpagina: www.ljharri.nl ; e-mail: ljharri@xs4all.nl
- Delfzijl: **Datema Delfzijl BV**, Zeesluizen 8, 9936 HX Delfzijl,
Tel. +31 (0)596 - 635252; Fax. +31 (0)596 - 615245;
Internetpagina: www.datema.nl ; e-mail: delfzijl@datema.nl
- Eemshaven: **Nautical Centre**, Borkumweg 6-10, 9979 XH Eemshaven,
Tel: +31 (0)596 - 634870; Fax: +31 (0) 596 - 634827
Internetpagina: www.davids-maritime.nl ; e-mail: info@nauticalcentre.com
- Rotterdam **ChartCo Nederland B.V.**, Klompenmakerstraat 64, 3194 DE Hoogvliet,
Tel. +31 (0)10 - 4167622; Fax. +31 (0)10 - 4167218;
Internetpagina: www.kelvinhughes.com ; e-mail: nlsales@kelvinhughes.nl
- Datema Rotterdam**, Galvanistraat 148, 3029 AD Rotterdam,
Tel. +31 (0)10 - 4366188; Fax. +31 (0)10 - 4365511 ; e-mail: rotterdam@datema.nl
- Harri Trading BV**, Van Weerden Poelmanweg 4, 3088 EB Rotterdam,
Tel. +31 (0)10 - 4290333; Fax. +31 (0)10 - 4282324;
Internetpagina: www.harritrading.nl ; e-mail: info@harritrading.nl
- Antwerpen: **Bogerd/Martin & Co.**, Oude Leeuwenrui 37, 2000 Antwerpen,
Tel. +32 (0)32134170; Fax. +32 (0)32326167;
Internetpagina: www.martin.be ; e-mail: sales@martin.be
- Hamburg: **HanseNautic GmbH**, Herrengraben 31, D-20459 Hamburg,
Tel. +49 (0)403748420; Fax. +49 (0)4037484242;
Internetpagina: www.hansenautic.de ; e-mail: info@hansenautic.de
- Bremen: **"Seekarte" Kpt. A. Dammeyer**, Korffsdeich 3, D-28217 Bremen,
Tel. +49 (0)421395051; Fax. +49 (0)4213962235;
Internetpagina: www.seekarte.com e-mail: seekarte@seekarte.de
- London: **KH Charts**, Unit 4, Voltage Mollison Avenue, Enfield EN3 7XQ
Tel. +44 (0) 1992805200 ; Fax +44 (0) 1992805410 ;
Internetpagina: www.kelvinhughes.com ; e-mail : cams@kelvinhyges.co.uk
- St. Maarten: **Budget Marine**, P.O.Box 434; Philipsburg, Tel. 599 - 5443134; Fax 599 - 5444409

B-agenten:

- Den Haag: **Koninklijke Nederlandse Toeristenbond ANWB**, Wassenaarseweg 220, 2596 EC Den Haag, Tel. +31 (0)70 - 3147147; en bijkantoren; Internetpagina : www.anwb.nl
- Scheveningen: **Vrolijk Watersport Scheveningen**, Treilerweg 65, 2583 DB Scheveningen,
Tel: +31 (0) 70 - 4168282, Fax: +31 (0) 70 - 3060497,
internetpagina: www.vrolijk.nl ; e-mail : winkel@vrolijk.nl ;
- Antwerpen: **Firma U.V.O.**, Napoleonskaai 3-7, 2000 Antwerpen,
Tel. +32 - (0)32331330; Fax +32- (0)32330551;
Internetpagina: www.uvoyachtinting.be ; e-mail: uvoyachting@scarlet.be
- St Ives: **Imray Laurie Norie & Wilson Ltd**, Wych House, The Broadway, St Ives, Huntingdon, Cambridgeshire PE17 4BT, Tel. +44 - (0)1480 - 462114; Fax. +44 - (0)1480 - 496109
Internetpagina: www.imray.com ; e-mail: ilnw@imray.com
- Bielefeld: **Delius Klasing Verlag GMBH**, Kammerratsheide 30a, Postfach 101671, D-33609 Bielefeld, Tel: +49 (0) 521 - 559000; Fax. +49 (0)521 - 559113;
internetpagina: www.delius-klasing.de ; e-mail: info@delius-klasing.de

Voorwoord

- Overeenkomstig SOLAS-bepalingen en het Scheepvaart Reglement Westerschelde dienen de officieel uitgegeven zeekaarten en boekwerken met Berichten aan Zeevarenden (BaZ) bijgewerkt te worden. Algemene richtlijnen voor het gebruik van BaZ staan beschreven in de jaarlijkse BaZ 3 in weekeditie 1, British Admiralty NP 100 (Mariner's Handbook) en NP 294 (How to keep your Admiralty Charts up-to-date).
- Berichten aan Zeevarenden hebben alleen betrekking op Nederlandse kaarten en hydrografische publicaties. Berichten van toepassing op buitenlands gebied op Nederlandse kaarten worden overgenomen van de hydrografische dienst van het betreffende land. Berichten bevatten algemene mededelingen, correcties op kaarten of boeken, voorlopige (P) of tijdelijke (T) berichten of een overzicht.
- Gegevens die ten grondslag liggen aan berichten worden waar nodig kartografisch gegeneraliseerd. De berichten zijn alleen bedoeld om de publicaties genoemd in het bericht te kunnen corrigeren.
- Posities worden vermeld in het referentiestelsel (geodetisch datum) dat overeenkomt met dat van de betrokken kaart. Het referentiestelsel is altijd op de kaart vermeld. Onjuiste interpretatie van de referentiestelsels kan leiden tot positiefouten van enkele honderden meters.
- Richtingen, peilingen, geleidelijnen en lichtsectoren worden rechtwijzend gegeven, in graden, gerekend vanuit zee.
- Diepten en hoogten worden gegeven in dezelfde eenheid en herleid tot hetzelfde referentievlak als gebruikt in de betrokken kaart.
- Nadruk van de berichten is toegestaan mits volledig, ongewijzigd en met bronvermelding.
- De Chef der Hydrografie verzoekt u dringend vermoede of nieuwe gevaren en onjuistheden in publicaties te melden.

De Chef der Hydrografie

Van der Burchlaan 31 (gebouw 32), Postbus 90701, 2509 LS Den Haag,
tel. +31 (0)70 3162817, fax. +31 (0)70 3162843, internetpagina: www.hydro.nl ; e-mail ; baz@hydro.nl

Preface

- *In accordance with SOLAS-regulations and the Scheepvaart Reglement Westerschelde official published nautical charts and books have to be kept corrected by means of Notices to Mariners (NL NM). General guidelines for the use of NL NM are described in the annual NL NM 3 in weekly edition 1, British Admiralty NP 100 (The Mariner's Handbook) and NP 294 (How to keep your Admiralty Charts up-to-date).*
- *Netherlands Notices to Mariners are only applicable for Netherlands nautical charts and hydrographic publications. Notices concerning foreign waters on Netherlands charts are adopted from the hydrographic service of that specific country. Notices contain general announcements, corrections for charts or books, preliminary (P) or temporary (T) notices or a summary.*
- *Data on which the notices are based are if necessary cartographically generalized. The notices are meant only to correct the publications that are stated in the notice.*
- *Positions are given in the reference system (geodetic datum) that corresponds with that of the relevant chart. The reference system is always printed on the chart. Incorrect interpretation of the reference system can lead to errors in the position of several hundreds of metres.*
- *Directions, bearings, leading lines and light sectors are true, in degrees, reckoned from seawards.*
- *Depths and heights are given in the same unit and are reduced to the same reference level as used in the relevant chart.*
- *Reprinting of the notices is allowed if complete, unchanged and with acknowledgement.*
- *The Hydrographer of the Netherlands Navy urges you strongly to report suspected or new dangers and errors in publications.*

Hydrographer of the Netherlands Navy

Van der Burchlaan 31, P.O. Box 90701, 2509 LS Den Haag, tel. +31 (0)70 3162817 ;
fax. +31 (0)70 3162843, Internetpage: www.hydro.nl ; e-mail ; baz@hydro.nl

Inhoudsopgave

Kruisverwijzing / <i>Cross reference</i>	4
Algemene berichten / <i>General notices</i>	5
Opgeheven (P) en (T) berichten / <i>Cancelled (P) and (T) notices</i>	5
Berichten Zeekaarten / <i>Notices Nautical charts</i>	5
Berichten 1800 serie kaarten / <i>Notices 1800 series charts</i>	9
Berichten Hydrografische publicaties / <i>Notices Hydrographic publications</i>	11
Lijst van mobiele boorunits / <i>Rig list</i>	12
Meetinstrumenten / <i>Measuring instruments list</i>	13

Kruisverwijzing / *Cross reference*

In de hoofdstukken Zeekaarten, 1800 serie kaarten en Hydrografische publicaties van dit document zijn de Berichten aan Zeevarenden gerangschikt op BaZ-nummer. Onderstaand overzicht toont deze berichten per kaartnummer en het nummer van de hydrografische publicatie.

In the Nautical charts, 1800 series charts and Hydrographic publications sections of this document the Notices to Mariners are sorted by NL NM-number. The overview below displays these notices sorted by chart and hydrographic publication number.

Zeekaarten / *Nautical Charts*

Kaart / <i>Chart</i>	BaZ / <i>NL NM</i>
HP8	157(P)/13
1014	157(P)/13
1035	157(P)/13
110	157(P)/13
122	157(P)/13
125	157(P)/13
126	157(P)/13
1630	157(P)/13
1631	157(P)/13
1970	157(P)/13
2716	*158/13

1800 serie kaarten / *1800 series charts*

Kaart / <i>Chart</i>	BaZ / <i>NL NM</i>
1801	157(P)/13 163(T)/13
1811	*160/13 *161(T)/13 *162/13
1812	*159(T)/13

Hydrografische publicaties/ *Hydrographic publications*

Publication BaZ / NL NM

NIL

Algemene berichten / *General notices*

NIL

Opgeheven (P) en (T) berichten / *Cancelled (P) and (T) notices*

Kaart / <i>Chart</i>	Int.	BaZ / NL NM	Opgeheven / <i>Cancelled</i>
1801		121(T)/13	04 apr 2013, NOORDZEE. BELGIE. NIEUWPOORT.
1811		*145(P)/13	04 apr 2013, WADDENZEE. AANLOPEN KORNWEDERZAND EN HARLINGEN.
1812		153(T)/13	04 apr 2013, WADDENZEE. DUITSLAND. OSTEREMS.

Berichten Zeekaarten / *Notices Nautical charts*

157(P)/13 NOORDZEE. TSS WIJZIGINGEN PER 1 AUGUSTUS.

Kaart / <i>Chart</i>	Int. / <i>Int.</i>	Itemnr. / <i>Itemno.</i>
HP8	n.a.	1, 2, 3, 4, 5
1014	1043	1, 2, 3, 4, 5
1035	1046	1, 2, 3, 4, 5
110	1473	1, 2, 3, 4, 5
122	1472	1, 2, 3, 4, 5
125	1469	1, 2, 3, 4, 5
126	1468	1, 2, 3, 4, 5
1630	1416	1, 2, 3, 4, 5
1631	1418	1, 2, 3, 4, 5
1970	n.a.	1, 2, 3, 4, 5
1801	n.a.	1, 2, 3, 4, 5

- 1** *To improve the safety of navigation in the area off the coast of the Netherlands between Texel and North Hinder, the International Maritime Organization has approved extensive new and amended routing measures to be implemented at 0000 UTC 1 August 2013.*

"TSS Off Texel" : Diagram 1

(See: *illu_tss off texel_y2013_baz157*)

In the area west of Texel, the International Maritime Organization has approved amendments to the existing traffic separation scheme, "TSS Off Texel", and a new direction of traffic flow southbound, as follows:

- 1. The north-eastbound traffic lane of the "TSS Off Texel" will be reoriented and extended south-westward.*
- 2. The south-westbound traffic lane of the "TSS Off Texel" will be extended south-westward to join the new recommended direction of traffic flow southbound "Off Breeveertien" leading through the new precautionary area "Rijnveld".*

3. A new southbound traffic lane at the end of the existing south-westbound lane of the "TSS Off Texel" will be established for vessels bound for the new TSSs "Maas North" and "IJmuiden North".

2 "West of Rijnveld" : Diagram 2

(See: *illu_west of rijnveld_y2013_baz157*)

In the area "West of Rijnveld", the International Maritime Organization has approved the establishment of a new precautionary area, a new direction of traffic flow southbound and a new area to be avoided, as follows:

4. A new precautionary area "Rijnveld" will be established in order to regulate traffic coming from the north-eastbound lane of the amended "TSS North Hinder North", the north-west and south-eastbound lanes in and out of the amended "TSS Maas Northwest" and the north and southbound traffic to and from the new precautionary area "Maas Junction".
5. A new recommended direction of traffic flow southbound "Off Breeveertien" will be established joining the new precautionary area "Rijnveld" and the junction of the amended south-westbound traffic lane "TSS Off Texel".
6. A new area to be avoided "at De Ruyter" will be established around the De Ruyter offshore platform.

3 "In the Approaches to IJmuiden" : Diagram 3

(See: *illu_app to ijmuiden_y2013_baz157*)

In the approach to IJmuiden, the International Maritime Organization has approved the establishment of three new traffic separation schemes and new routeing measures "In the Approaches to IJmuiden" and amendments to the Deep-water route and Deep-water approach area leading to IJmuiden. Within the scheme, the following changes will be implemented:

7. Three new TSSs; "TSS IJmuiden West Outer", "TSS IJmuiden West Inner" and "TSS IJmuiden North" will be established. These schemes will regulate traffic in and out of IJmuiden so that inbound vessels, not confined by their draught, keep south of the route as far inshore as possible whilst the outbound vessels, not confined by their draught, stay north of it.
8. A precautionary area "IJmuiden Crossing" will be established at the seaward end of the new "TSS IJmuiden West Outer" to enable vessels to cross the DW route and the DW approach area.
9. A precautionary area "IJmuiden Junction" will be established at the junction of the "TSS IJmuiden West Inner" and "TSS IJmuiden West Outer" and also "TSS IJmuiden North" leading to the amended "TSS Off Texel". This will enable inbound vessels from the north to join eastbound vessels in the approach to IJmuiden.
10. A new area to be avoided "by IJmuiden Northern Approaches" will be established at the former explosives dumping ground off IJmuiden.
11. The deep-water approach area will be amended in order to provide more manoeuvring space for deep draught vessels involved in pilot embarkation or disembarkation.
12. An emergency turning area will be established at the inner fairway buoy, five miles off the harbour entrance, for deep draught inbound vessels.

4 "Hook of Holland and at North Hinder" : Diagram 4

(See: *illu_h of h and at north hinder_y2013_baz157*)

In the approaches to Europoort, the International Maritime Organization has approved amendments to the existing traffic separation schemes and routeing measures "In the Approaches to Hook of Holland and at North Hinder". Within the scheme, the following changes will be implemented:

- 13. The "TSS Maas North" will move about 4.5 miles westwards to be in alignment with a new precautionary area "Ijmuiden Crossing".*
- 14. A new area to be avoided "at Maas North" will be established within the new separation zone at "TSS Maas North" at the former explosives dumping ground off Hoek van Holland.*
- 15. The "TSS Maas Northwest" will be moved about 4 miles westwards as a consequence of the amended "TSS Maas North".*
- 16. The "TSS Maas West Inner" and "TSS Maas West Outer" will be shortened to fit between the amended precautionary areas "Maas Centre Precautionary Area" and "North Hinder Junction Precautionary Area".*
- 17. The "TSS North Hinder North" will be realigned to take traffic further to the East of the Horizon platform.*
- 18. To accommodate the amendments to the above traffic separation schemes, the precautionary areas "Maas Centre", "Maas Junction" and "North Hinder Junction" will be amended.*
- 19. The deep-water approach area to the deep-water channel will be extended for the use of deep draught in-bound vessels from the south-west.*
- 20. The inshore end of the deep-water channel at the entrance to Europoort will be extended to the breakwater.*
- 21. Two new emergency turning areas within the deep-water channel will be established for the use of in-bound vessels.*
- 22. The areas to be avoided "At North Hinder Junction Point" and "At Maas Centre" will be discontinued.*

5 Details of all the above changes are shown on the accompanying Diagrams 1 to 4, including an overview of all the changes on Diagram 5.

(see: *illu_routeing measures_y2013_baz157*)

In addition to the above changes, Vessel Traffic Service (VTS) rules will be revised and radio reporting points, pilot stations, radar ranges, buoyage and anchorages will be amended and repositioned. Details of these changes will be published in the relevant NLHO and UKHO Publications.

Details of the new routeing measures will be included in New Editions of Charts 110, 122, 125, 126, 1630, 1631, 1801, 1035 and 1014 to be published in June 2013. These charts will be published with a cautionary note advising mariners that the existing charts, which will be given an 'X' prefix, should be retained and used until 0000 UTC 1 August 2013. New Editions of charts 1970 and HP 8 will be published in June 2013. Chart 116 will be corrected by NM.

Note: Mariners are advised that this is a significant change to IMO routeing and associated measures in the southern North Sea and in the approaches to IJmuiden and Europoort. Mariners should familiarise themselves with these changes and ensure that they have all the necessary chart and publication updates in advance of the implementation date.

Bron / Source: IMO en NLHO; BDS 640/13.

***158/13** NEDERLANDSE ANTILLEN. SINT MAARTEN.

Kaart / Chart	Int. / Int.	Vorig BaZ / Prev. NL NM	Uitgave / Edition	Itemnr. / Itemno.
2716.E	n.a.	209/12	Dec 2009	1
1 Aanbrengen <i>Insert</i>	Text: Works in progress		op / at 18-02,65 N	063-05,40 W

Bron / Source: Port of St.Maarten; BDS 604/13.

Berichten 1800 serie kaarten / Notices 1800 series charts

157(P)/13 NOORDZEE. TSS WIJZIGINGEN PER 1 AUGUSTUS.

Kaart / Chart	Int. / Int.	Itemnr. / Itemno.
1801	n.a.	1

1 Zie tekst 157(P)/13 Berichten Zeekaarten / See text 157(P)/13 Notices Nautical charts

Bron / Source: IMO en NLHO; BDS 640/13.

*159(T)/13 WADDENZEE. DUITSLAND. OSTEREMS.

Kaart / Chart	Int. / Int.	Itemnr. / Itemno.
1812.6	n.a.	1, 2

1 Aanbrengen
Insert



Fl.Y.4s

op / at 53-36,31 N 006-52,65 E

2 Aanbrengen
Insert



Fl.Y.4s

op / at 53-36,10 N 006-53,15 E

Bron / Source: WSA Emden/BFS (T)46/13; BDS 598/13.

*160/13 WADDENZEE. VINGEGAT.

Kaart / Chart	Int. / Int.	Vorig BaZ / Prev. NL NM	Uitgave / Edition	Itemnr. / Itemno.
1811.6	n.a.	146/13	Mrt 2012	1

1 Aanbrengen
Insert



V-GAS

op / at 53-19,45 N 005-30,06 E

Bron / Source: Berna/WSW 103/13; BDS 637/13.

***161(T)/13** WADDEENZEE. HARLINGEN. BOONTJES.

Kaart / Chart	Int. / Int.	Itemnr. / Itemno.
1811.4	n.a.	1

- 1** In verband met werkzaamheden aan een gasleiding in positie ca. 53-10.00 N 005-22,50 E in het vaarwater Boontjes wordt de scheepvaart verzocht geen hinder te veroorzaken en aanwijzingen op te volgen gegeven door het patrouillevaartuig ter plaatse.
Doorgaande vaart vanaf Kornwederzand of Harlingen via de Boontjes dienen contact op te nemen met de uitvoerende werkschepen op VHF 10 voor een veilige doorvaart.

Due to works at a pipeline in position ca. 53-10.00 N 005-22,50 E in fairway Boontjes, shipping will be requested to avoid obstructing movements and follow the instructions of the patrol vessel at station.

Shipping from and to Kornwederzand or Harlingen via the Boontjes are requested to contact the working vessels on VHF 10 to request safe navigation.

Bron / Source: Berna/WSW 105/13; BDS 639/13.

***162/13** WADDENZEE. AANLOPEN KORNWEDERZAND EN HARLINGEN.

Kaart / Chart	Int. / Int.	Vorig BaZ / Prev. NL NM	Uitgave / Edition	Itemnr. / Itemno.
1811.3	n.a.	160/13	Mrt 2012	2
1811.4	n.a.	160/13	Mrt 2012	1

- 1** Aanbrengen bijgesloten verbeterblad.
In positie ca. 53-08,00 N 005-20,00 E
(attentie gebruik de juiste printerinstellingen)

*Insert the accompanying block.
In position ca. 53-08,00 N 005-20,00 E.
(attention! use the proper printer settings).*

- 2** Aanbrengen bijgesloten verbeterblad.
In positie ca. 53-05,00 N 005-19,00 E
(attentie gebruik de juiste printerinstellingen)

*Insert the accompanying block.
In position ca. 53-05,00 N 005-19,00 E.
(attention! use the proper printer settings).*

Bron / Source: Berna/WSW 89 en 90/13; BDS 524/13.

163(T)/13 NOORDZEE. BELGIE. NIEUWPOORT.

Kaart / Chart	Int. / Int.	Itemnr. / Itemno.
1801.2	n.a.	1

1 Schietoefeningen te Nieuwpoort, worden gehouden van 08:00 tot 17:00 lokale tijd op:

- a. 15 april in de midden sector;
- b. 16 april in de midden sector;
- c. 17 april in de kleine sector;
- d. 18 april in de kleine sector;
- e. 19 april in de kleine sector.

- f. 22 april in de midden sector;
- g. 23 april in de midden sector;
- h. 24 april in de midden sector;
- i. 25 april in de midden sector;
- j. 26 april in de midden sector.

Scheepvaart wordt verzocht ruime afstand te bewaren.

Zie voor meer informatie BE BaZ: 36A - 39 van week 1. (zie www.vlaamsehydrografie.be).

Gunnery exercises in area Nieuwpoort, will be conducted from 08:00 to 17:00 local time at:

- a. 15 April in the middle sector;*
- b. 16 April in the middle sector;*
- c. 17 April in the small sector;*
- d. 18 April in the small sector;*
- e. 19 April in the small sector.*

- f. 22 April in the middle sector;*
- g. 23 April in the middle sector;*
- h. 24 April in the middle sector;*
- i. 25 April in the middle sector;*
- j. 26 April in the middle sector.*

Shipping is requested to give a wide berth.

For further information see BE NtM: 36A - 39 of weekly 1. (see www.vlaamsehydrografie.be).

Bron / Source: Oostende/BAZ 7/115(T)/13; BDS 625/13.

Berichten Hydrografische publicaties / Notices Hydrographic publications

NIL

Lijst van mobiele boorunits / Rig list

Overzicht van mobiele boorunits werkzaam in de Noordzee (Nederlands karteergebied). De opgegeven posities zijn in WGS 84. Alleen de meest grootschalige kaart wordt genoemd. Geplaatste mobiele boorunits hebben een veiligheidszone van 500m (0,27 M).

Summary of mobile drilling units employed in the North Sea (Dutch Charting Area). The positions given are in WGS 84. Only the largest scale chart is quoted.

The mobile drilling units are protected by a 500 m (0,27 M) safety zone.

N Nieuw / New

V Verwijderd / Deleted

G Gewijzigd / Changed

	Naam Name		Positie Position		Kaart Chart
	Seafox 1	53-03,30 N	002-17,20 E		1035
	Noble Ronald Hoop	53-33,20 N	000-45,30 E		1014
	Noble Al White	53-41,50 N	003-29,30 E		1632
	Maersk Resolve	54-02,80 N	001-12,30 E		1035
N	Noble Al White	54-12,70 N	004-44,30 E		1633
	Energy Endeavour	55-31,78 N	005-00,32 E		1037
	GSF Monarch	55-32,33 N	005-01,86 E		1037

Bron / Source: Navarea One 1 t/m 57 WZ 1 t/m 402

Meetinstrumenten / Measuring instruments list

Overzicht van tijdelijke meetinstrumenten in het Nederlands zeegebied, binnenwateren en aangrenzend buitenlands gebied. Scheepvaart wordt verzocht niet te vissen noch te ankeren in de nabijheid van deze posities en op ruime afstand te passeren. Alleen de meest grootschalige kaart wordt genoemd.

Summary of temporary measuring instruments in the Netherlands sea area, inland waters and adjacent foreign waters. Shipping is requested not to fish nor anchor near these positions and to give a wide berth. Only the largest scale chart is quoted.

N Nieuw / New

V Verwijderd / Deleted

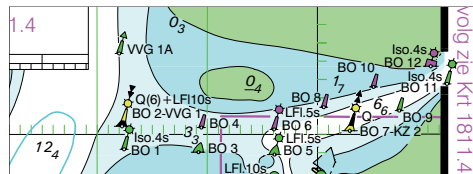
G Gewijzigd / Changed

	Naam Name	Vaarwater Waters	Licht Light	Positie Position	Kaart Chart	1800 Serie 1800 Series
	KUST30	Raversijde	FI(5)Y.20s	51-13,23 N 002-52,17 E	1035	1801.2
	H 8	Dyck Route	FI.Y.5s	51-13,31 N 002-52,17 E	1035	1801.2
	Kust 100	Oostende		51-14,86 N 002-55,63 E		1801.2
N	aMT 1	Haven Zeebrugge	FI.Y.5s	51-20,66 N 003-12,75 E	116	1801.3
N	aMT 2	Haven Zeebrugge	FI.Y.5s	51-21,06 N 003-11,88 E	116	1801.3
	MP 6	Westerschelde	Unlit	51-21,07 N 004-14,58 E		1803.5
	MP 7	Westerschelde	Unlit	51-21,34 N 003-45,55 E	120B	1803.3
	32	Zeebrugge	FI(5)Y.20s	51-21,41 N 003-10,27 E	116	1801.3B
	HD 29	Zeebrugge	FI(5)Y.20s	51-21,46 N 003-10,24 E	116	1801.3B
	PVT	Terneuzen	FI(5)Y.20s	51-21,49 N 003-44,70 E	120	1803.3
N	aMT 3	Haven Zeebrugge	FI.Y.5s	51-21,50 N 003-12,20 E	116	1801.3
	12	Westerschelde	FI(5)Y.20s	51-21,59 N 003-07,19 E	116	1801.3
		Westerschelde	FI(5)Y.20s	51-21,66 N 003-06,89 E	116	1801.3
	HD 24	Zeebrugge	FI.Y.5s	51-21,72 N 003-17,40 E	116	1801.3
	OVVA	Valkenisse	FI(5)Y.20s	51-22,24 N 004-08,21 E	116	1801.3
	OVHW	Hansweert	FI(5)Y.20s	51-22,52 N 003-55,05 E	120	1803.3
N	aMT	Nadering Zeebrugge	FI.Y.5s	51-22,57 N 003-10,98 E	116	1801.3
N		Nadering Zeebrugge	Unlit	51-22,57 N 003-10,80 E	116	1801.3
	H 9	Zeebrugge	FI.Y.5s	51-23,57 N 003-11,75 E	116	1801.3
	MP 3	Westerschelde	Unlit	51-24,49 N 003-42,31 E	120	1803.2 & 1803.3
	HNTE	Honte	FI(5)Y.20s	51-26,50 N 003-41,18 E	120G	1801.4 & 1803.2
	MP 2	t.h.v. de Honte	Unlit	51-26,82 N 003-39,79 E	120G	1803.2
	H 1	Thorntonbank zuid	Q(6)+LFI.15s	51-28,39 N 002-45,53 E	1630	1801.3
	HD 29	Thorntonbank zuid	FI.Y.5s	51-28,49 N 002-45,36 E	1630	1801.3
	HD 14	Thorntonbank zuid	FI.Y.5s	51-28,51 N 002-45,61 E	1630	1801.3
	H 7	Thorntonbank zuid	Q	51-28,61 N 002-45,53 E	1630	1801.3
		Platte Bank	Unlit	51-30,38 N 004-06,35 E		1805.7
N		Oosthinderbank	Unlit	51-30,56 N 002-37,81 E	1630	
	SvY 1	Schaar v Yerseke	FI(5)Y.20s	51-31,23 N 004-01,79 E		1805.5
		Slikken va den Dortsman	Unlit	51-32,04 N 004-02,86 E		1805.5 & 1805.7
		Thorntonbank	FI(5)Y.20s	51-33,65 N 002-59,10 E	110	
	ELIA 2	Westerschelde	FI.Y.5s	51-35,02 N 002-50,57 E	1630	
	ELIA 1	Westerschelde	FI.Y.5s	51-35,11 N 002-50,67 E	1630	
	ELIA 3	Westerschelde	FI.Y.5s	51-35,19 N 002-50,79 E	1630	
N	NW 8	Lodewijk	FI.Y.5s	51-35,65 N 002-53,13 E	1630	
N	NWWR 2	Lodewijkbank	Unlit	51-35,72 N 002-53,06 E	1630	
N	NW 10	Lodewijkbank	FI.Y.5s	51-35,72 N 002-52,93 E	1630	
N	NW 9	Lodewijkbank	FI.Y.5s	51-35,79 N 002-53,11 E	1630	
N	NW 11	Lodewijkbank	FI.Y.5s	51-36,49 N 002-55,52 E	1630	
N	NW 13	Lodewijkbank	FI.Y.5s	51-36,55 N 002-55,32 E	1630	
N	NWWR 1	Lodewijkbank	Unlit	51-36,55 N 002-55,44 E	1630	
N	NW 12	Lodewijkbank	FI.Y.5s	51-36,63 N 002-55,50 E	1630	
	ELIA 6	Westerschelde	FI.Y.5s	51-36,69 N 002-46,96 E	1630	
	ELIA 5	Westerschelde	FI.Y.5s	51-36,70 N 002-46,70 E	1630	
	ELIA 4	Westerschelde	FI.Y.5s	51-36,78 N 002-46,82 E	1630	

Naam Name	Vaarwater Waters	Licht Light	Positie Position		Kaart Chart	1800 Serie 1800 Series
	Blighbank	FI(5)Y.20s	51-39,71 N	002-46,64 E	110	
	Blighbank	FI(5)Y.20s	51-41,68 N	002-47,85 E	110	
SCHB	Schouwenbank	FI(5)Y.20s	51-44,60 N	003-18,40 E	110	1801.5
SCB 2	Schouwenbank	FI(5)Y.20s	51-44,63 N	003-18,37 E	110	1801.5
MEET 2	Haringvliet	FI(3)Y.10s	51-49,19 N	004-04,44 E		1807.6
MEET 3	Haringvliet	FI(4)Y.15s	51-49,60 N	004-03,00 E		1807.6
	Blyth to Orford Ness	FI(5)Y.20s	52-05,03 N	001-41,00 E		1035
MEET S	W v Scheveningen	VQ(6)+LFI.10 s	52-05,42 N	004-08,37 E	122 & 125	1801.7
MEET E	W v Scheveningen	Unlit	52-05,46 N	004-08,62 E	122 & 125	1801.7
MEET W	W v Scheveningen	Unlit	52-05,57 N	004-08,44 E	122 & 125	1801.7
MEET N	W v Scheveningen	VQ	52-05,61 N	004-08,69 E	122 & 125	1801.7
	Blyth to Orford Ness	FI(5)Y.20s	52-06,49 N	001-54,83 E	1035	
	Blyth to Orford Ness	FI(5)Y.20s	52-09,59 N	001-47,87 E	1035	
	Blyth to Orford Ness	FI(5)Y.20s	52-12,66 N	001-40,84 E	1035	
	Blyth to Orford Ness	FI(5)Y.20s	52-12,74 N	001-38,39 E	1035	
	Blyth to Orford Ness	FI(5)Y.20s	52-15,56 N	001-48,43 E	1035	
	Blyth to Orford Ness	FI(5)Y.20s	52-18,41 N	001-55,75 E	1035	
	Blyth to Orford Ness	FI(5)Y.20s	52-22,20 N	001-51,00 E	1035	
	Blyth to Orford Ness	FI(5)Y.20s	52-22,32 N	001-50,80 E	1035	
	Blyth to Orford Ness	FI(5)Y.20s	52-35,05 N	001-45,21 E	1035	
FL 60	IJsselmeer	FI(5)Y.20s	52-45,70 N	005-11,66 E		1810.4
FL 61	IJsselmeer	FI(5)Y.20s	52-46,16 N	005-09,07 E		1810.4
	Unterems	FI.Y.4s	53-06,42 N	007-21,86 E		1812.8A
	Unterems	FI.Y.4s	53-08,32 N	007-22,10 E		1812.8A
AZB 61	Vingegat	FI(5)Y.20s	53-19,13 N	005-34,49 E		1811.6
	Eems	FI.Y.4s	53-19,52 N	007-05,13 E	1555	1812.8
	Eems	FI.Y.4s	53-19,52 N	007-05,13 E	1555	1812.8
	Eems	FI.Y.4s	53-20,17 N	006-59,17 E	1555	1812.7
AZB 51	Zwarte Haan	FI(5)Y.20s	53-21,28 N	005-34,95 E		1811.6
AZB 62	Dantziggat	FI(5)Y.20s	53-22,39 N	005-46,22 E		1812.2
AZB 41	Oosterom	FI(5)Y.20s	53-23,44 N	005-35,68 E		1811.6
AZB 52	Dantziggat	FI(5)Y.20s	53-23,49 N	005-41,71 E		1812.2 & 1811.6
AZB 42	Westgat Ameland	FI(5)Y.20s	53-25,46 N	005-38,19 E		1811.6
Ness	Molengat	FI(5)Y.20s	53-25,79 N	005-45,53 E		1812.2A
AZB 31	Westgat Ameland	FI(5)Y.20s	53-26,92 N	005-35,26 E	1458	1811.6
AZB 32	Westgat Ameland	FI(5)Y.20s	53-27,00 N	005-36,31 E		1811.6
PBW 1	Pieterburenwad	FI(5)Y.20s	53-27,49 N	006-27,60 E		1812.5
AZG 7	Westgat Ameland	Unlit	53-27,57 N	005-36,44 E		1811.6
AZBDW	Westgat Ameland	FI(5)Y.20s	53-27,81 N	005-35,47 E		1811.6
AZG 6	Westgat Ameland	Unlit	53-28,20 N	005-36,87 E		1811.6
AZB 21	Bornrif	FI(5)Y.20s	53-29,20 N	005-34,42 E	1458	1811.10
OWEZ	Oude Westereems	FI(5)Y.20s	53-29,28 N	006-43,59 E	1460	1812.6
BOSZ 1	Boschgat	FI(5)Y.20s	53-29,74 N	006-27,60 E		1812.5
G	Emshorn Platte	FI.Y.4s	53-30,37 N	006-53,00 E		1812.6
	Ems	FI.Y.4s	53-30,38 N	006-53,15 E		1812.6
OWEN	Oude Westereems	FI(5)Y.20s	53-30,79 N	006-40,64 E	1460	1812.6
AZB 11	Bornrif	FI(5)Y.20s	53-31,80 N	005-28,66 E	1458	1811.10
LAUO 1	Lauwers	FI(5)Y.20s	53-32,46 N	006-27,00 E		1812.9
AZB 12	Bornrif	FI(5)Y.20s	53-32,49 N	005-39,55 E	1458	1811.10
RZGN 1	Oude Westereems	FI(5)Y.20s	53-34,22 N	006-37,95 E	1460	1812.6
	Ems. Borkum.	FI(5)Y.20s	53-34,58 N	006-39,64 E	1460	1812.6
	Ems. Osterems	FI.Y.5s	53-37,14 N	006-55,62 E	1460	1812.6
WEW 1	Westereems	FI(5)Y.20s	53-37,20 N	006-22,12 E	1460	1812.9
WEO 1	Westereems	FI(5)Y.20s	53-37,22 N	006-31,31 E	1460	1812.9
	Ems. Osterems.	FI.Y.5s	53-37,53 N	006-58,14 E	1460	1812.6
H 2	Ooster Eems	Unlit	53-41,91 N	006-34,82 E	1460	1812.9 & 1812.10
MEET B	Borkum Noord	FI(5)Y.20s	53-44,15 N	006-37,17 E	1353	1812.9
BRKN 1	Westereems	FI(5)Y.20s	53-44,15 N	006-37,36 E	1353	1812.9
	Duitse Bocht	FI(5)Y.20s	53-51,46 N	006-15,73 E	1353 & 1633	
S 1	Duitse Bocht	FI(5)Y.20s	53-51,46 N	006-15,73 E	1353	
S3	Duitse Bocht	FI(5)Y.20s	53-54,20 N	006-17,20 E	1353	
S2	Duitse Bocht	FI(5)Y.20s	53-54,42 N	006-40,27 E	1353	
S5	Duitse Bocht	FI(5)Y.20s	53-55,20 N	006-11,80 E	1353	

Naam Name	Vaarwater Waters	Licht Light	Positie Position		Kaart Chart	1800 Serie 1800 Series
S4	Duitse Bocht	Fl(5)Y.20s	53-56,00 N	006-18,80 E	1353	
Mess G	Duitse bocht	Fl.(5)Y.20s	54-00,00 N	006-11,42 E	1353	
	Duitse Bocht	Fl(5)Y.20s	54-22,39 N	005-07,22 E	1037	
	Friesland Junction	Fl(5)Y.20s	54-22,39 N	005-07,22 E	1037	
	Horns Rev	Fl(5)Y.20s	55-36,70 N	007-31,75 E	1037	

Verbeterblad voor kaart 1811.3 bij BaZ 162/13 Afm blad 62,3 x 22,5 mm
Block for chart 1811.3 to NL NtM 162/13 Size block 62.3 x 22.5 mm



Verbeterblad voor kaart 1811.4 bij BaZ 162/13 Afm blad 101,6 x 149 mm
Block for chart 1811.4 to NL NtM 162/13 Size block 101.6 x 149 mm

