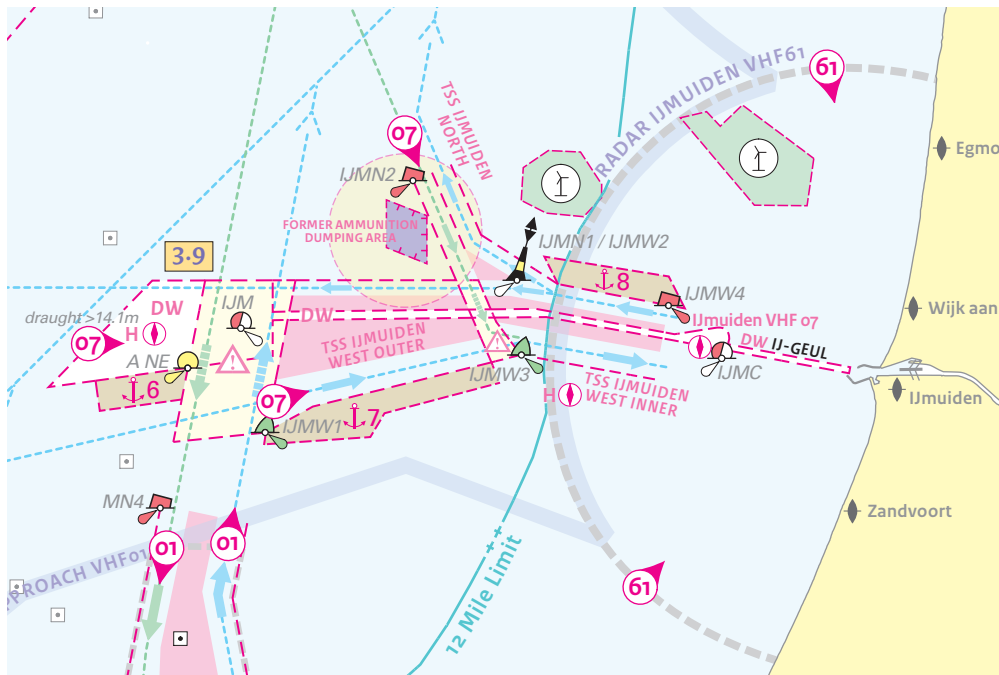


**Behoort bij BaZ nr 528/13 Belongs to NL NtM 528/13**

Add this cut out and table on chart 1970:



VTS Centres	VHF Ch.	Call
Belgian coast and Westerschelde approach	60 65 69 64	Wandelaar Approach Traffic Centre Wandelaar Traffic Centre Zeebrugge Traffic Centre Steenbank
Hoek van Holland approach	01 02 03	Maas Approach Maas Pilot Maas Entrance
Scheveningen approach	21	Traffic Centre Scheveningen
IJmuiden approach	07 61	IJmuiden Approach (Supporting VHF Channel: first contact to verify ship's information) IJmuiden Port Control
Den Helder approach	62	Traffic Centre Den Helder
Terschelling and Harlingen approach	02	Traffic Station Brandaris
Ems	(see 7.3.4)	